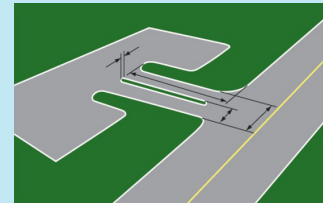
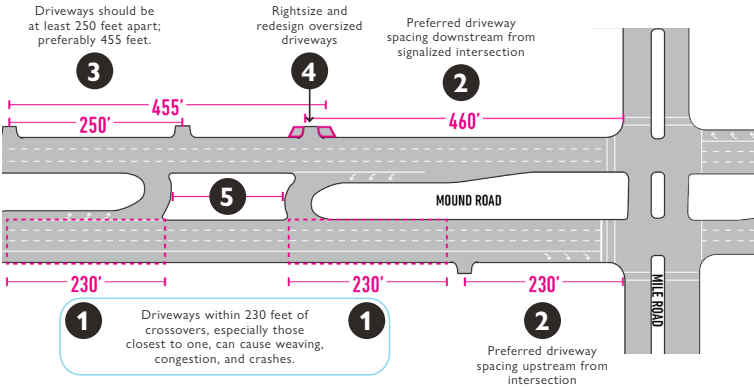


General Design Guidelines and Standards



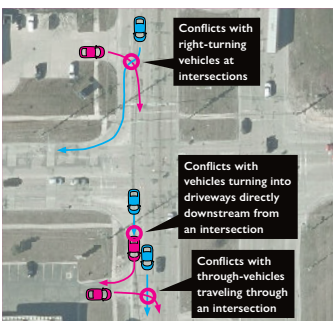
DRIVEWAY DESIGN

Driveway width, length, turning radius, and signage impact traffic flow and safety. Certain driveways need larger turning radii due to high truck and/or traffic volumes. However, large turning radii and wider driveways than needed also make the corridor less safe.

Access management includes standards for:

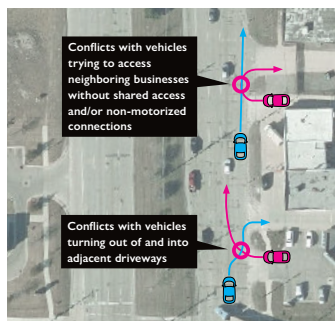
- 1 Driveway placement near median crossovers
- 2 Driveway placement near major intersections
- 3 Spacing between driveways
- 4 Driveway design (radii, width, tapers, etc.)
- 5 Median crossover spacing and design

Mound Road Typical Access Management Conditions



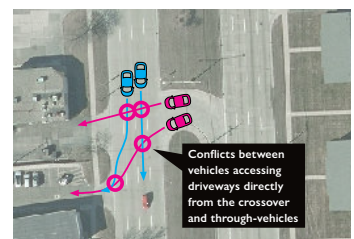
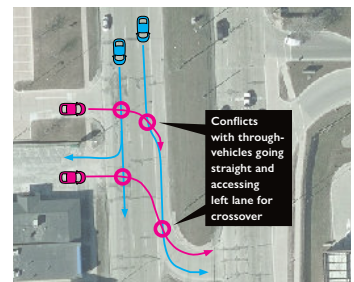
Access near signalized intersections

Driveways located close to intersections create conflicts between vehicles turning in and out of driveways and vehicles going through the intersection.



Driveway spacing

Fewer and farther-spaced access points lead to better traffic flow and fewer crashes. Poor separation between driveways also imposes more conflict for pedestrians and bicyclists along Mound Road.



Access too close to median crossovers

Driveways located close to or directly across from crossovers can encourage unsafe weaving activity that creates conflicts with through-vehicles or vehicles accessing the same crossovers or driveways.