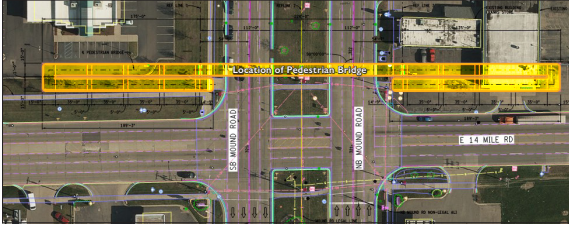


# Enhanced Pedestrian Facilities

## Alternative #1: Pedestrian Bridges



CONFIGURATION OF PROPOSED PEDESTRIAN CROSSINGS



EXAMPLE OF PEDESTRIAN BRIDGE

### Proposed bridge dimensions:

- 12' clear path
- 17'3" minimum underclearance crossing
- 224' Mound Road bridge span
- Two 364'3" approach ramps at approximately 7% grade

### Locations:

- 12 Mile Road crossing Mound Road
- 14 Mile Road crossing Mound Road

### Cost estimate:

\$5 million per location

### Estimated time to cross Mound Road:

4 minutes, 24 seconds

---

## Alternative #2: Enhanced Pedestrian Crossing



EXAMPLE OF ENHANCED PEDESTRIAN CROSSING

### Enhanced pedestrian crossing includes:

- Decorative crosswalk
- Sidewalk connectivity through the median
- Pedestrian signals and pushbuttons
- ADA compliant sidewalk ramps

### Locations:

- 12 Mile Road crossing Mound Road
- Arden Avenue crossing Mound Road
- 14 Mile Road crossing Mound Road
- Dobry Drive crossing Mound Road

### Cost estimate:

\$300,000 per location

### Estimated time to cross Mound Road:

From 2 minutes, 18 seconds to 3 minutes, 34 seconds depending on signal phase