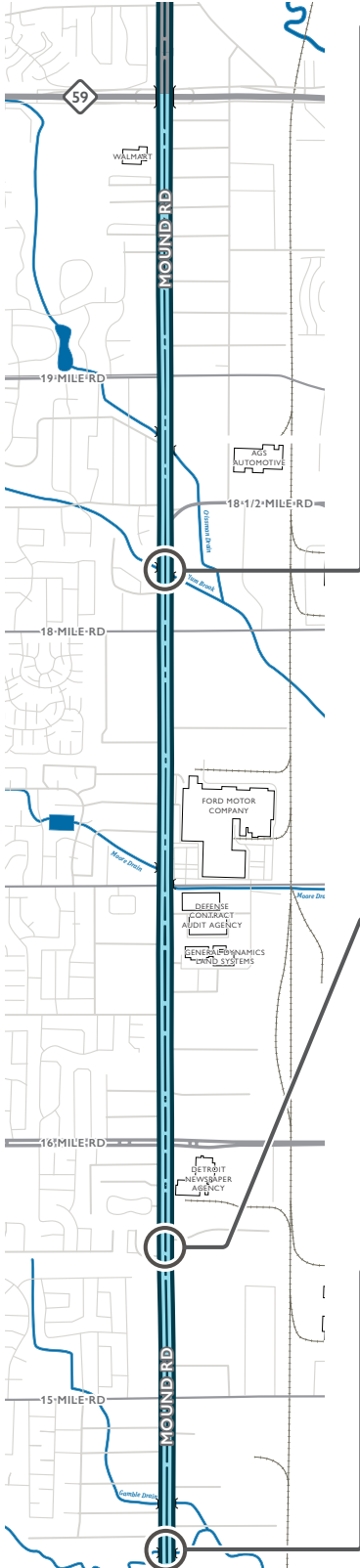


Bridges and Culverts



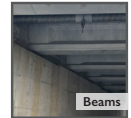
1 NORTHBOUND MOUND ROAD OVER PLUM BROOK

Single span prestressed concrete, multi-stringer composite bridge with concrete abutments.

- 34' long
- 50'4" from fascia to fascia

Recommended Work

- Structure widening
- Concrete deck patching
- Thin epoxy overlay
- Resealing pourable joints
- Placement of scour countermeasures
- Substructure patching
- Concrete surface coating



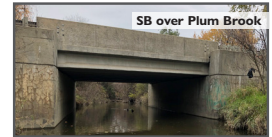
2 SOUTHBOUND MOUND ROAD OVER PLUM BROOK

Single span prestressed concrete, multi-stringer composite bridge with concrete abutments.

- 34' long
- 50'4" from fascia to fascia

Recommended Work

- Structure widening
- Concrete deck patching
- Thin epoxy overlay
- Resealing pourable joints
- Placement of scour countermeasures
- Substructure patching
- Concrete surface coating



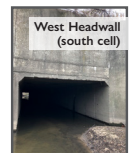
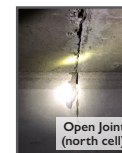
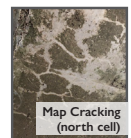
3 MOUND ROAD OVER STERLING HEIGHTS RELIEF DRAIN

Two cell four-sided box culvert with an 11'10" span and 7' rise.

- 26'9" long
- 251' from headwall to headwall

Recommended Work

- Culvert joint repair
- Substructure patching
- Removal of silt/debris within channel
- Place rip rap at channel openings



4 MOUND ROAD OVER BIG BEAVER CREEK

Precast three-sided concrete arch culvert on CIP concrete footings on driven pile.

- 36' long
- 190' from headwall to headwall

Recommended Work

- Bridge railing repair
- Sidewalk replacement
- Removal of silt/debris from channel
- Sealing of segment joints

