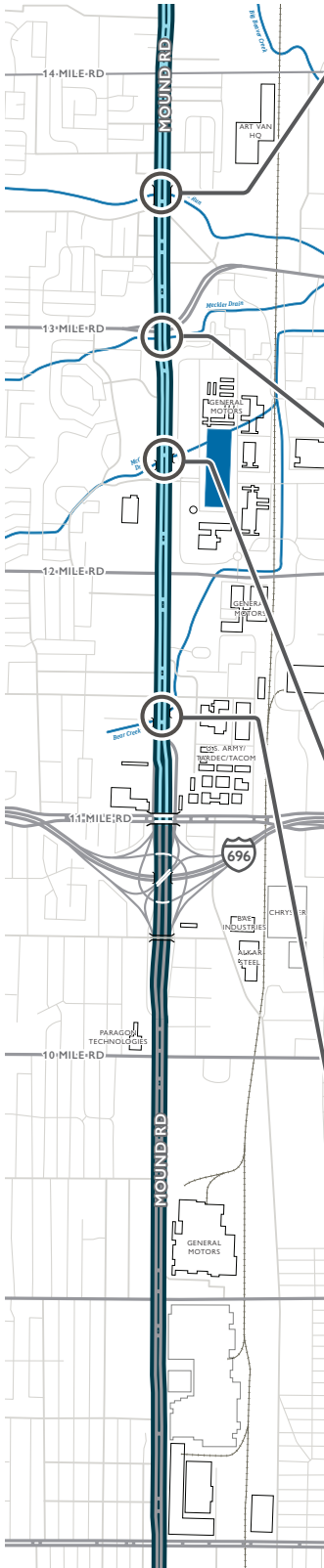


Bridges and Culverts

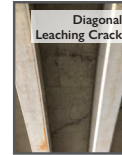


5 MOUND ROAD OVER RED RUN DRAIN
 Single span prestressed concrete, multi-stringer composite bridge with concrete abutments.

- 74' long
- 181'4" from fascia to fascia

Recommended Work

- Expansion joint replacement
- Reconstruct bridge approach pavement
- Resealing pourable joints
- Thin epoxy overlay
- Concrete surface coating



6 MOUND ROAD OVER MECKLER DRAIN
 Three-sided culvert with open floor.

- 280' long
- 10' wide sidewall to sidewall

Recommended Work

- Shallows and deep spalls repairs
- Crack repairs
- Grouting of pipe joints
- Debris removal

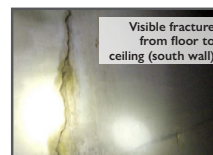


7 MOUND ROAD OVER MCCOY DRAIN
 Three-sided culvert with open floor. Noticeable deficiencies at ceiling joints throughout.

- 256' long
- 13'6" sidewall to sidewall

Recommended Work

- Shallows and deep spalls repairs
- Crack repairs
- Grouting of pipe joints
- Debris removal



8 MOUND ROAD OVER BEAR CREEK
 Corrugated Metal Pipe (CMP) arch on a concrete knee wall with a paved channel bottom.

- Arch is a 24'11" span with an 11' rise
- 240' from edge of CMP to edge of CMP

Recommended Work

- Removal of existing culvert and foundations
- Installation of new precast culvert and headwall

