



# MOUND ROAD CONCEPTUAL LANDSCAPE PLANS

OCTOBER 7, 2020

Prepared for Macomb County Department of Roads by MKSK



**MKSK**



NOTE: THESE MOUND ROAD CONCEPTUAL LANDSCAPE PLANS ARE FOR THE DESIGN-BUILDER'S REFERENCE ONLY. THIS LANDSCAPE WORK WILL BE PART OF A FUTURE CONTRACT.



TABLE OF CONTENTS

1. INTRODUCTION [p. 3]

- DESCRIPTION
- LANDSCAPE REQUIREMENTS

2. OVERALL CORRIDOR PLAN [p. 4]

3. TYPICAL INTERSECTION TREATMENT [p. 5-10]

- IMAGERY
- PLAN
- ENLARGEMENTS
- SECTIONS
- PLANT LIST

4. VILLAGE OF WARREN [p. 10-12]

- PLAN
- PLANT LIST

5. MEDIAN TYPOLOGIES [p. 13-15]

- MEDIAN TYPE A PLAN
- MEDIAN TYPE A PLANT LIST
- MEDIAN TYPE B PLAN
- MEDIAN TYPE B PLANT LIST

INTRODUCTION

The Innovate Mound corridor is located between I-696 and M-59 and is over 9 miles in length. The project will modernize and renew infrastructure including pavement, bridges, signals, signage, storm sewers, and lighting enhancements. Innovate Mound focuses on a multi-modal solution while addressing condition, safety and congestion.

Aesthetic features will include new landscape (future contract) and unified placemaking that will beautify Mound Road, positively impact the surrounding cities of Warren and Sterling Heights, and improve the overall user experience.

Landscaping improves the overall visual impact of the corridor by adding texture and interest at the street level. It is also performative, providing pervious surfaces, and reducing heat island effect. Landscaping along the corridor should be cohesive to enhance the streetscape and be low maintenance.

Note: Landscape will be a future contract

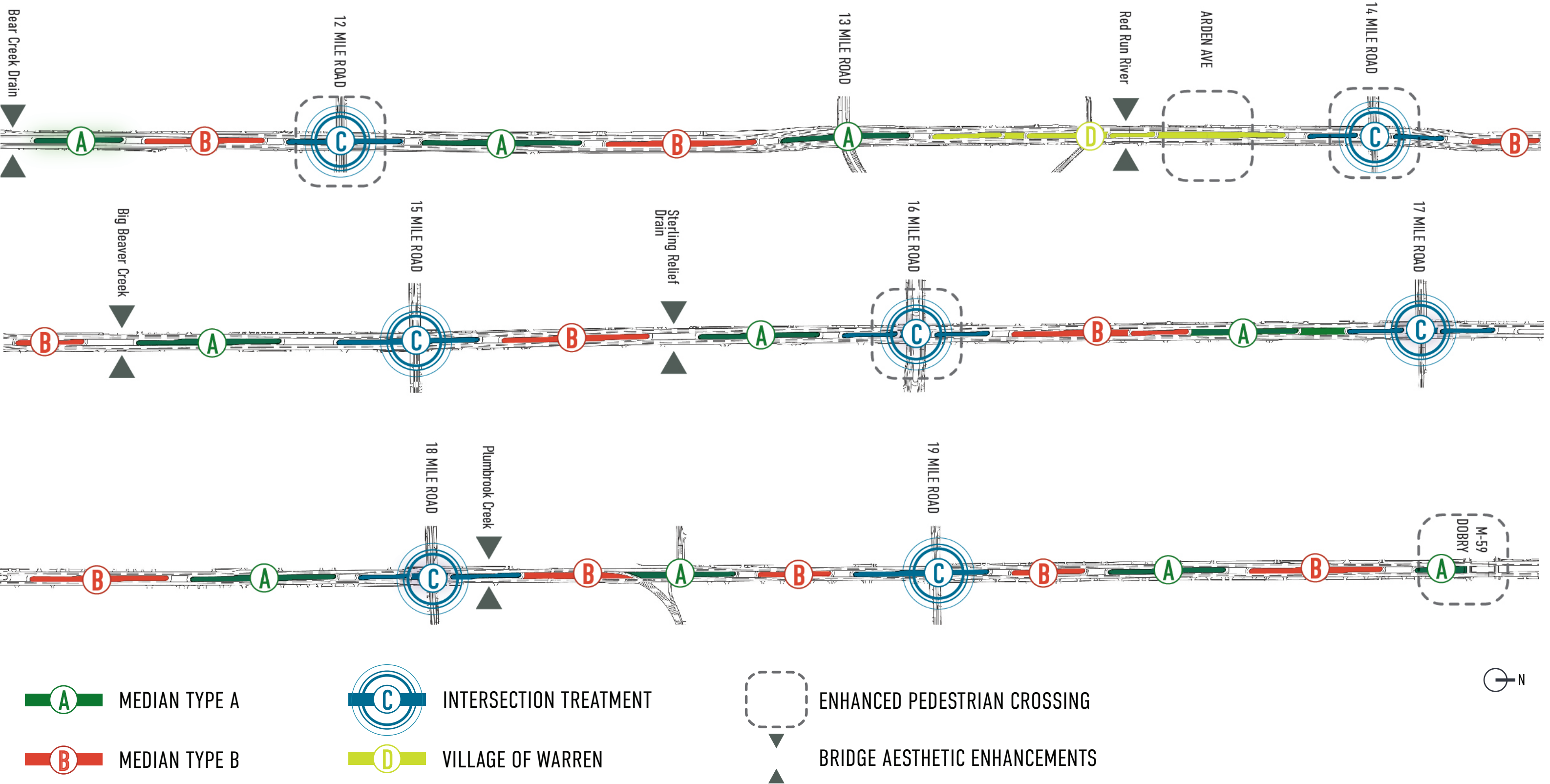
How to use these guidelines

The following plant species recommendations are provided for landscaping along the corridor. The use of these trees, evergreens, shrubs, grasses, and perennials should enhance the streetscape and be low maintenance. The list includes species well-adapted for the area and conditions found along an urban corridor. It is intended to be used as a guide. Availability, time of planting, and other factors may affect the specimens chosen at the time of construction. Plants selected should complement the intentions of this guide and any substitutions from the list of recommended plants require engineer approval.

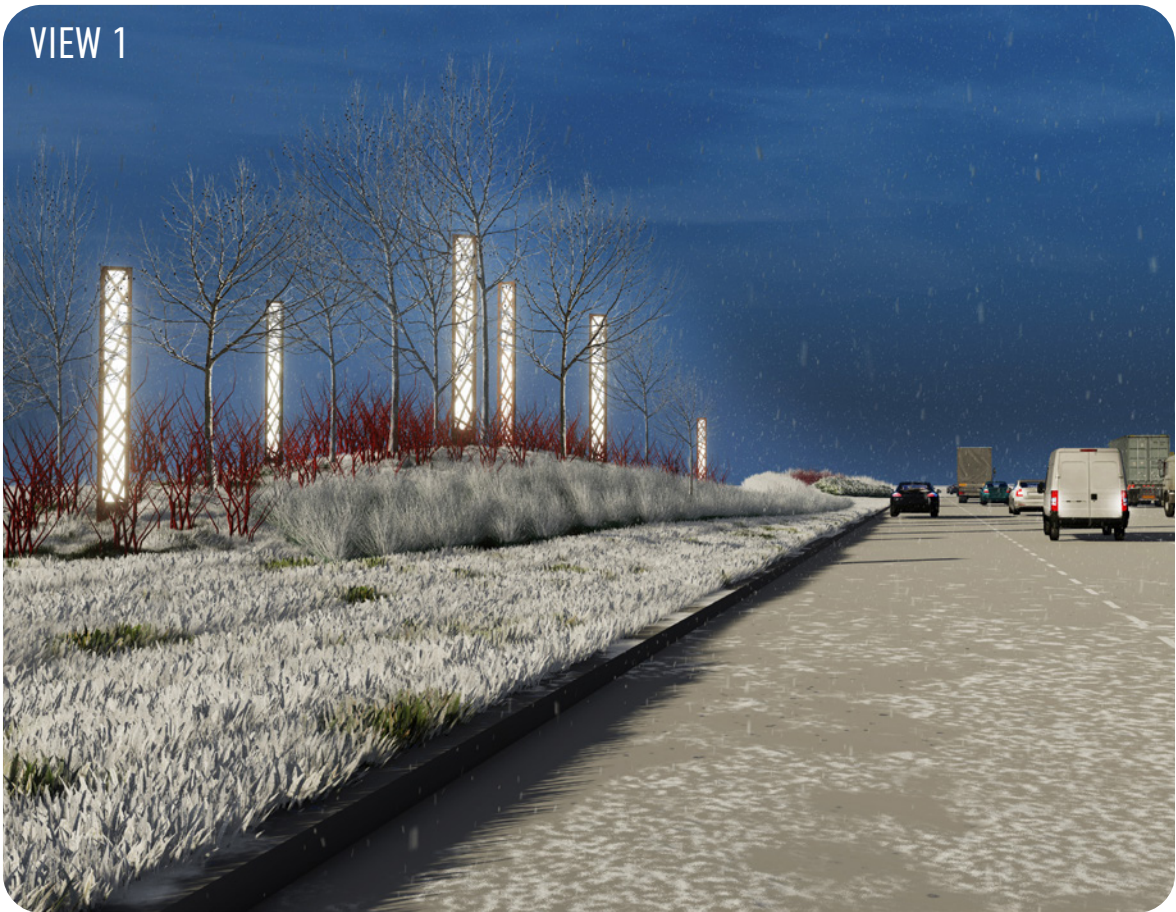
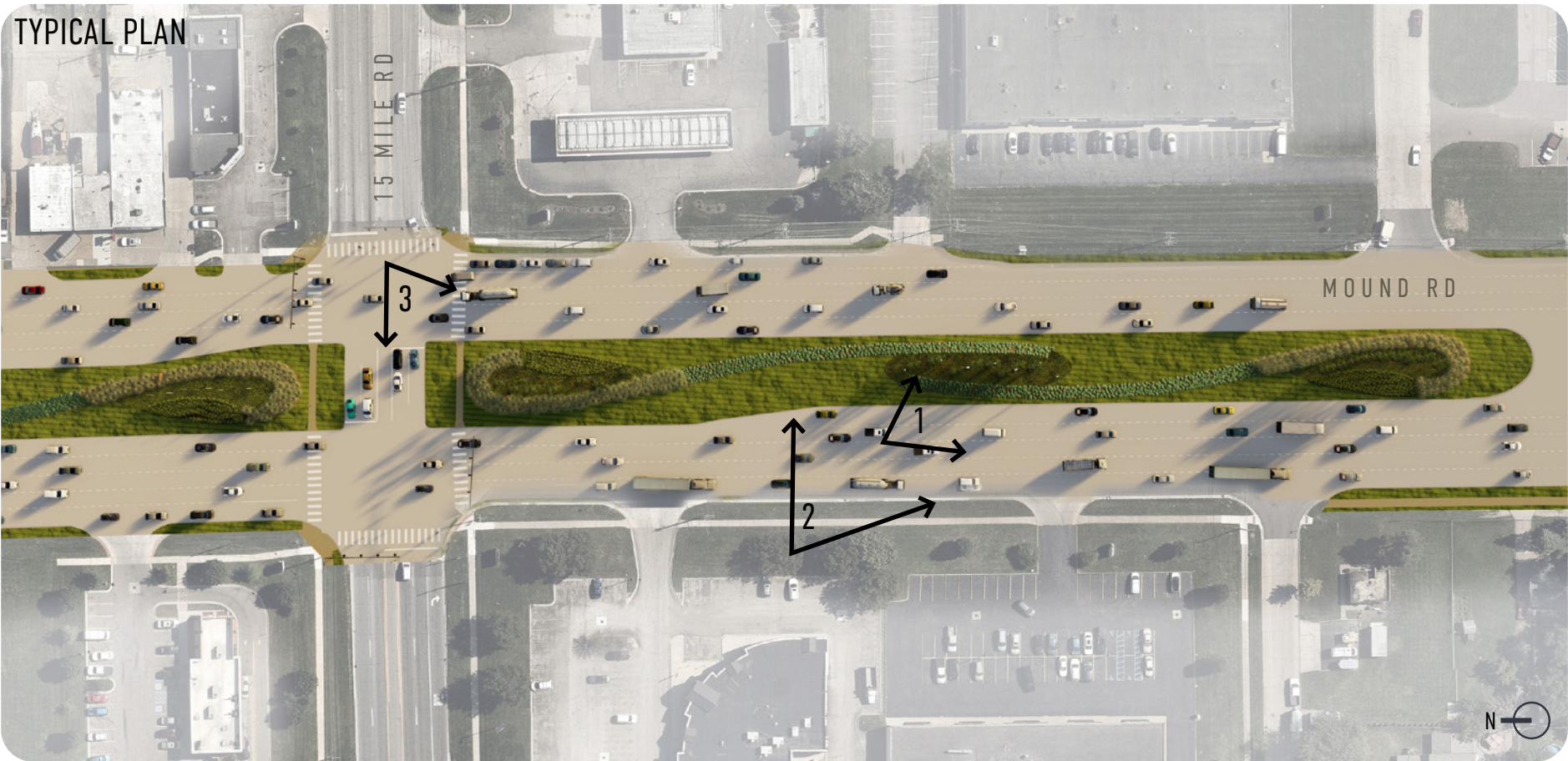
LANDSCAPE REQUIREMENTS (FUTURE CONTRACT)

PLANTING REQUIREMENTS
<b>Deciduous trees:</b> Minimum 2.5 in. caliper, B&B
<b>Evergreen trees:</b> Minimum 6 ft. height, B&B
<b>Ornamental trees:</b> Minimum 2 in. caliper, or 7 ft. height
<b>Deciduous &amp; evergreen shrubs:</b> Minimum #3 container size, or equivalent B&B size
<b>Perennials:</b> Minimum #1 container size
<b>Ornamental grasses:</b> Minimum #1 container size
<b>Seeded lawn:</b> See specifications
SOILS REQUIREMENTS
<b>Turf:</b> Strip and stockpile topsoil, Section 815.03 of the 2012 Standard Specifications of Construction.amend and install per specifications, section 205.03.A.1 of the 2012 Standard Specifications of Construction. Utilize seeding mixture THM for slope restoration. All topsoil shall be screened.
<b>Plant bed:</b> 8 in. depth amended topsoil, Section 815.03 of the 2012 Standard Specifications of Construction.
MAINTENANCE REQUIREMENTS
<b>Duration:</b> 2 years
<b>Maintenance needed:</b> Watering and cultivating in accordance with Section 815.03.J of the 2012 Standard Specifications for Construction <ul style="list-style-type: none"><li>Trees</li><li>Perennials</li><li>Ornamental Grasses</li></ul>

ABBREVIATIONS
<b>B&amp;B:</b> Balled and burlap
<b>Cal.:</b> Caliper







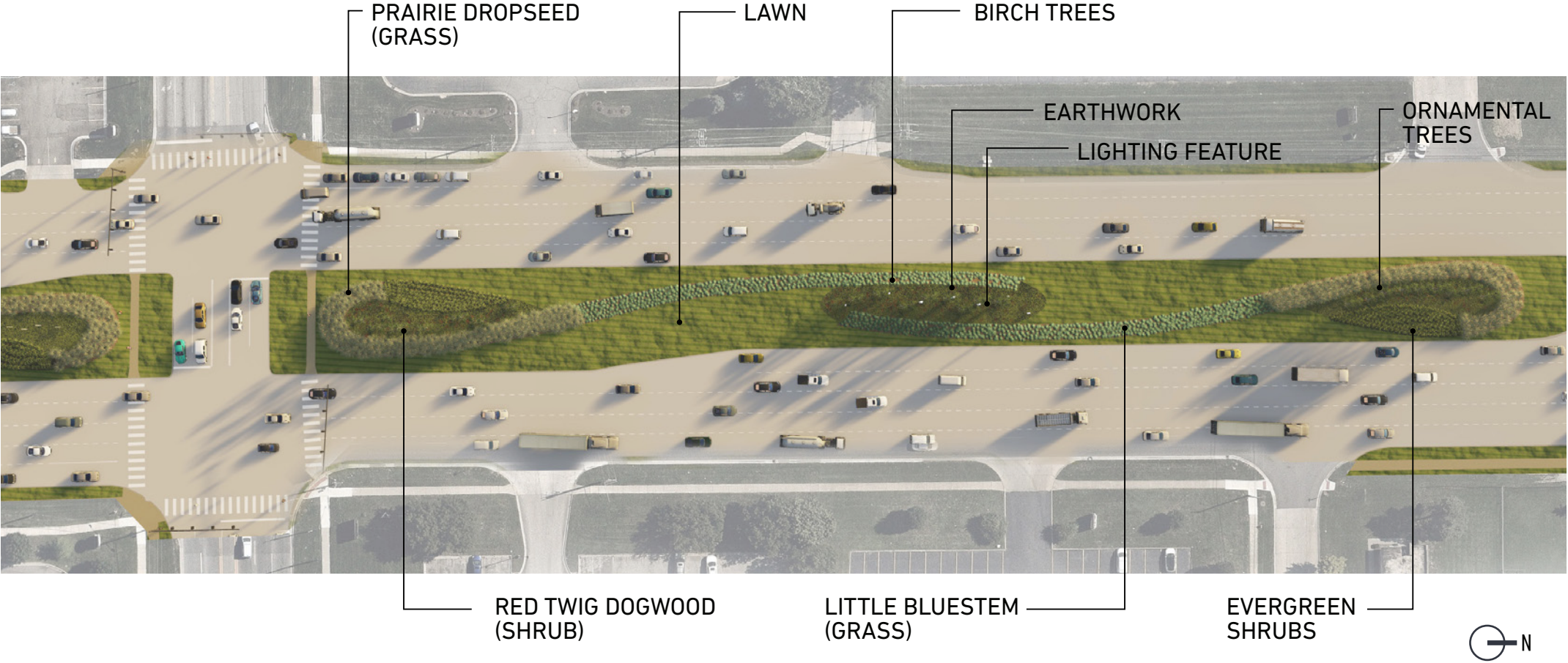


LANDSCAPE REQUIREMENTS

(FUTURE CONTRACT)

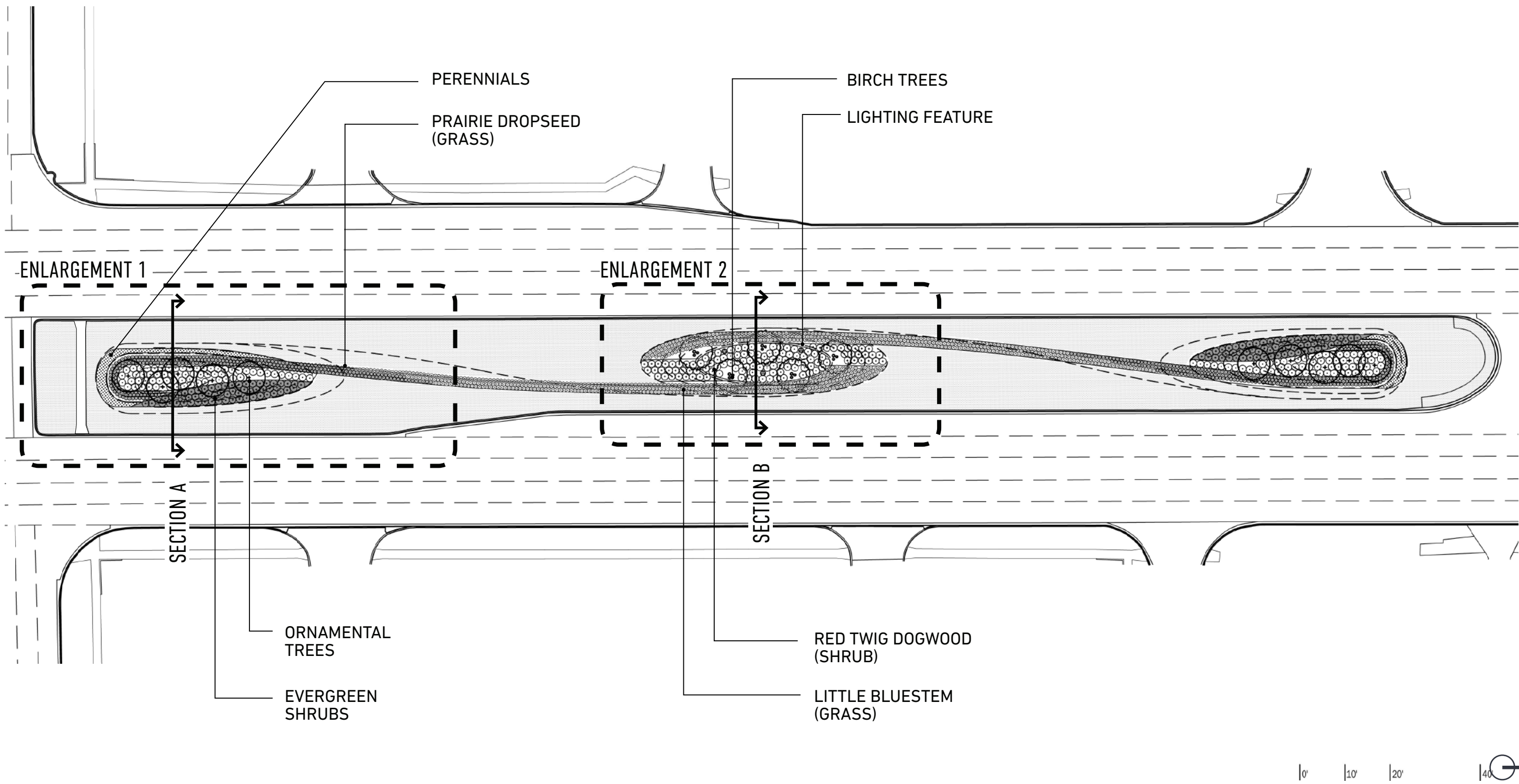
PLANTING REQUIREMENTS
<b>Deciduous trees:</b> Minimum 2.5 in. caliper, B&B
<b>Evergreen trees:</b> Minimum 6 ft. height, B&B
<b>Ornamental trees:</b> Minimum 2 in. caliper, or 7 ft. height
<b>Deciduous &amp; evergreen shrubs:</b> Minimum #3 container size, or equivalent B&B size
<b>Perennials:</b> Minimum #1 container size
<b>Ornamental grasses:</b> Minimum #1 container size
<b>Seeded lawn:</b> See specifications
SOILS REQUIREMENTS
<b>Turf:</b> Strip and stockpile topsoil, Section 815.03 of the 2012 Standard Specifications of Construction.amend and install per specifications, section 205.03.A.1 of the 2012 Standard Specifications of Construction. Utilize seeding mixture THM for slope restoration. All topsoil shall be screened.
<b>Plant bed:</b> 8 in. depth amended topsoil, Section 815.03 of the 2012 Standard Specifications of Construction.
MAINTENANCE REQUIREMENTS
<b>Duration:</b> 2 years
<b>Maintenance needed:</b> Watering and cultivating in accordance with Section 815.03.J of the 2012 Standard Specifications for Construction
<ul style="list-style-type: none"><li>• Trees</li><li>• Perennials</li><li>• Ornamental Grasses</li></ul>

INTERSECTION LANDSCAPE PLAN

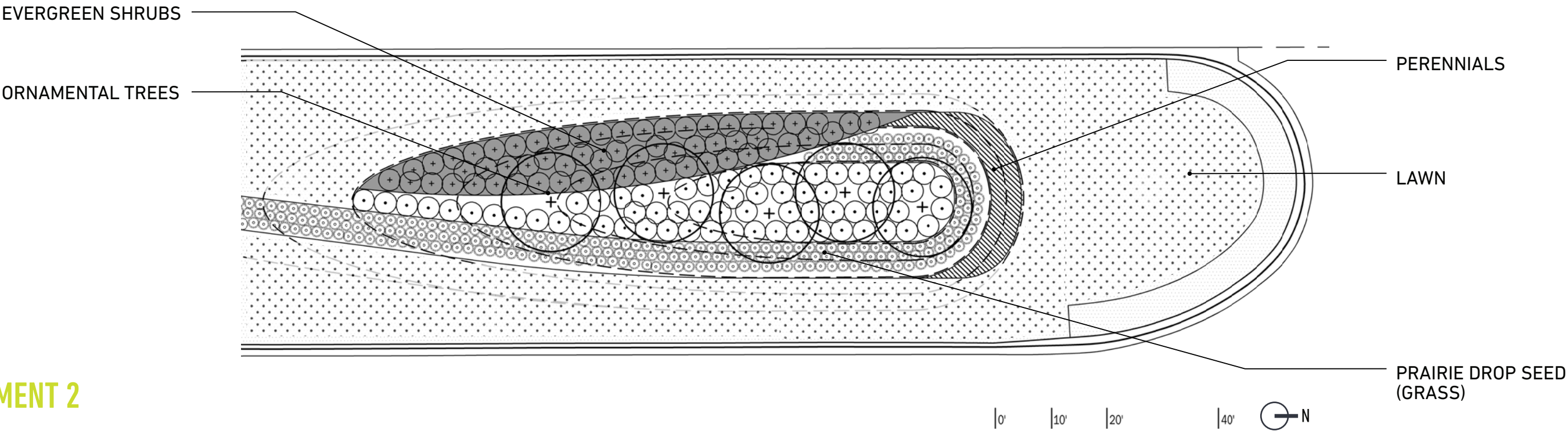




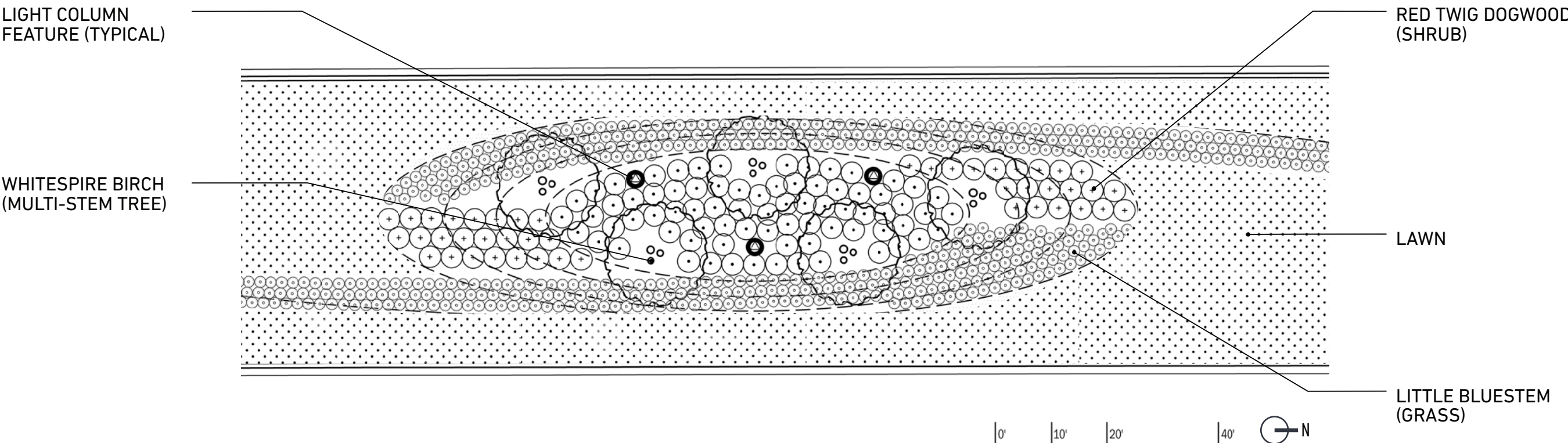
OVERALL PLAN



ENLARGEMENT 1

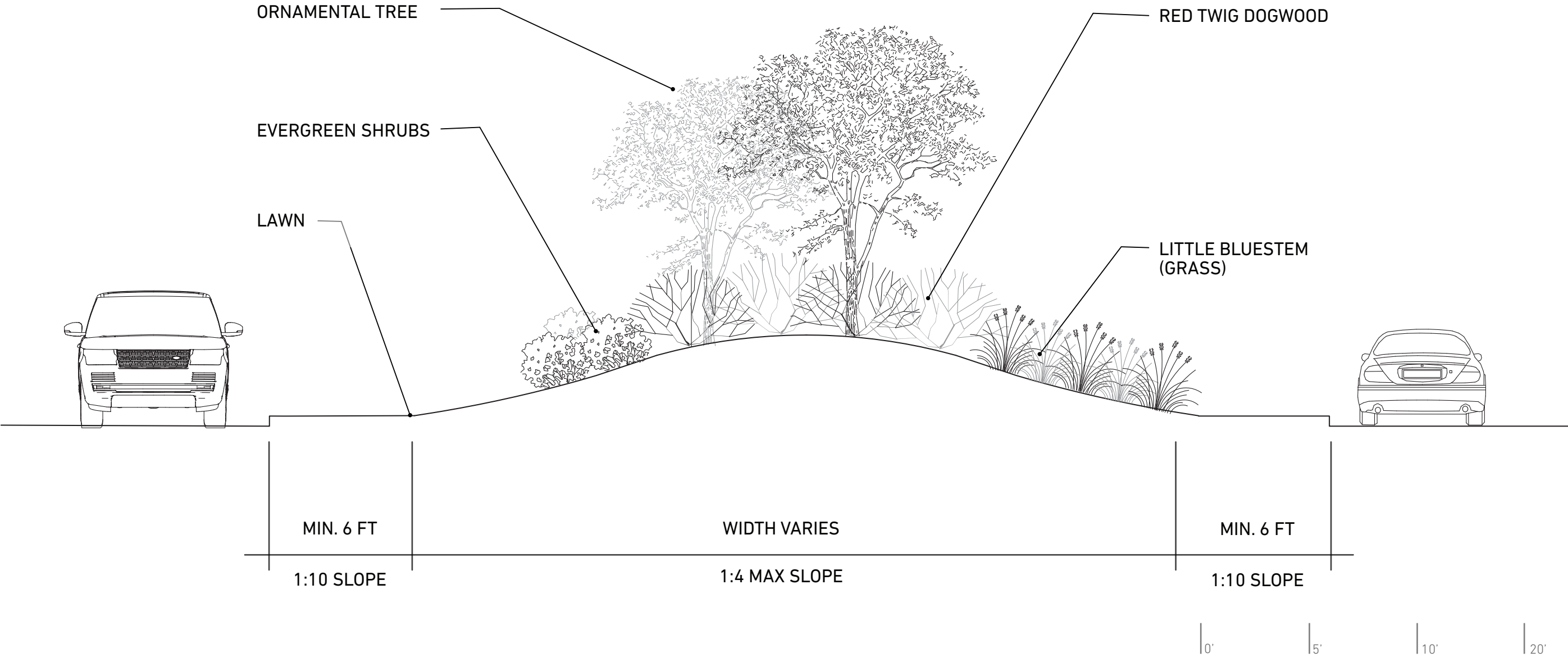


ENLARGEMENT 2

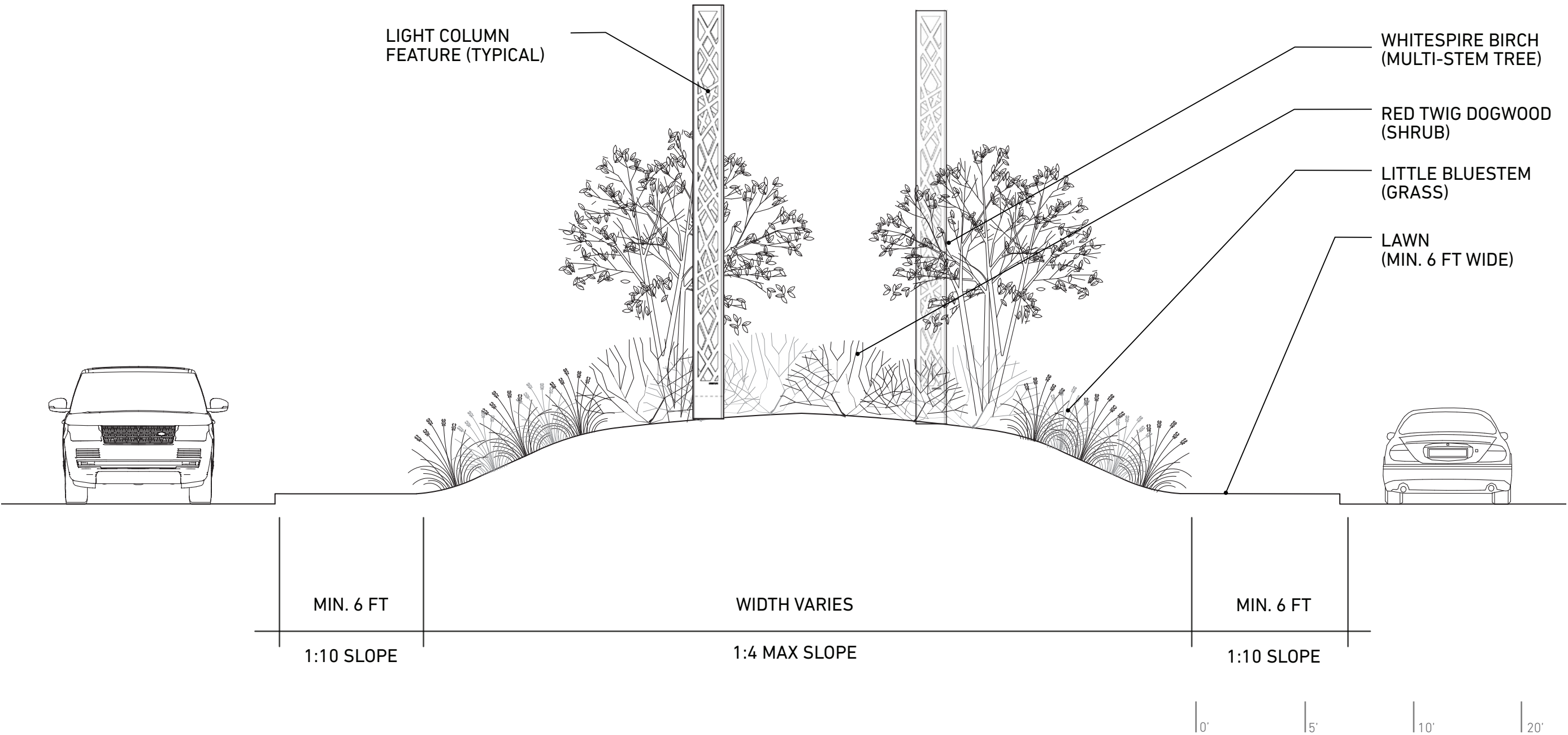




SECTION A



SECTION B





PLANT LIST

TREES
<i>Betula populifolia</i> 'Whitespire' Whitespire Birch
<i>Cornus Alternifolia</i> Pagoda Dogwood
<i>Crataegus</i> Hawthorne
<i>Malus</i> 'Harvest Gold' Harvest Gold Crabapple
<i>Malus</i> 'Madonna' Madonna Crabapple
SHRUBS
<i>Cornus sericea</i> Red Twig Dogwood
<i>Cornus sericea</i> 'Flaviramea' Yellow Tig Dogwood
<i>Juniperus virginiana</i> 'Grey Owl' Grey Owl Juniper
<i>Pinus mugo</i> Dwarf Mugo Pine
<i>Taxus × media</i> 'Everlow' Everlow Yew
GRASSES
<i>Bouteloua curtipendula</i> Blonde Ambition Sideoats Grama
<i>Sporobolus heterolepis</i> Prairie Dropseed
<i>Schizachyrium scoparium</i> Little Bluestem
PERENNIALS
<i>Hemerocallis</i> 'Little Business' Little Business Reblooming Daylily
<i>Leucanthemum × superbum</i> Shasta Daisy
<i>Perovskia atriplicifolia</i> Dwarf Russian Sage
<i>Salvia sylvestris</i> 'May Night' May Night Salvia
<i>Veronica</i> Speedwells



*Betula populifolia* 'Whitespire'  
Whitespire Birch



*Crataegus*  
Hawthorne



*Malus* 'Madonna'  
Madonna Crabapple



*Cornus sericea*  
Red Twig Dogwood



*Pinus mugo*  
Dwarf Mugo Pine



*Juniperus virginiana* 'Grey Owl'  
Grey Owl Juniper



*Sporobolus heterolepis*  
Prairie Dropseed



*Schizachyrium scoparium*  
Little Bluestem



*Hemerocallis* 'Little Business'  
Reblooming Daylily



*Leucanthemum × superbum*  
Shasta Daisy



*Salvia sylvestris* 'May Night'  
May Night Salvia



*Veronica*  
Speedwells





LANDSCAPE REQUIREMENTS (FUTURE CONTRACT)

PLANTING REQUIREMENTS
<b>Deciduous trees:</b> Minimum 2.5 in. caliper, B&B
<b>Evergreen trees:</b> Minimum 6 ft. height, B&B
<b>Ornamental trees:</b> Minimum 2 in. caliper, or 7 ft. height
<b>Deciduous &amp; evergreen shrubs:</b> Minimum #3 container size, or equivalent B&B size
<b>Perennials:</b> Minimum #1 container size
<b>Ornamental grasses:</b> Minimum #1 container size
<b>Seeded lawn:</b> See specifications

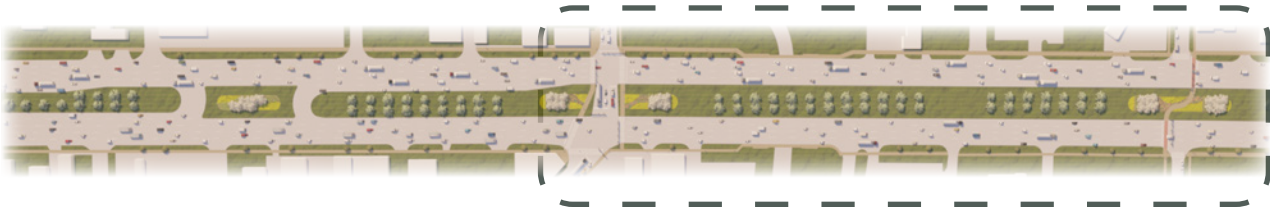
SOILS REQUIREMENTS
<b>Turf:</b> Strip and stockpile topsoil, Section 815.03 of the 2012 Standard Specifications of Construction.amend and install per specifications, section 205.03.A.1 of the 2012 Standard Specifications of Construction. Utilize seeding mixture THM for slope restoration. All topsoil shall be screened.
<b>Plant bed:</b> 8 in. depth amended topsoil
<b>Trees:</b> 12 in. depth, 6 ft. diameter per tree, imported planting soil.
MAINTENANCE REQUIREMENTS
<b>Duration:</b> 2 years
<b>Maintenance needed:</b> Watering and cultivating in accordance with Section 815.03.J of the 2012 Standard Specifications for Construction <ul style="list-style-type: none"><li>• Trees</li><li>• Perennials</li><li>• Ornamental Grasses</li></ul>

PLAN





KEY

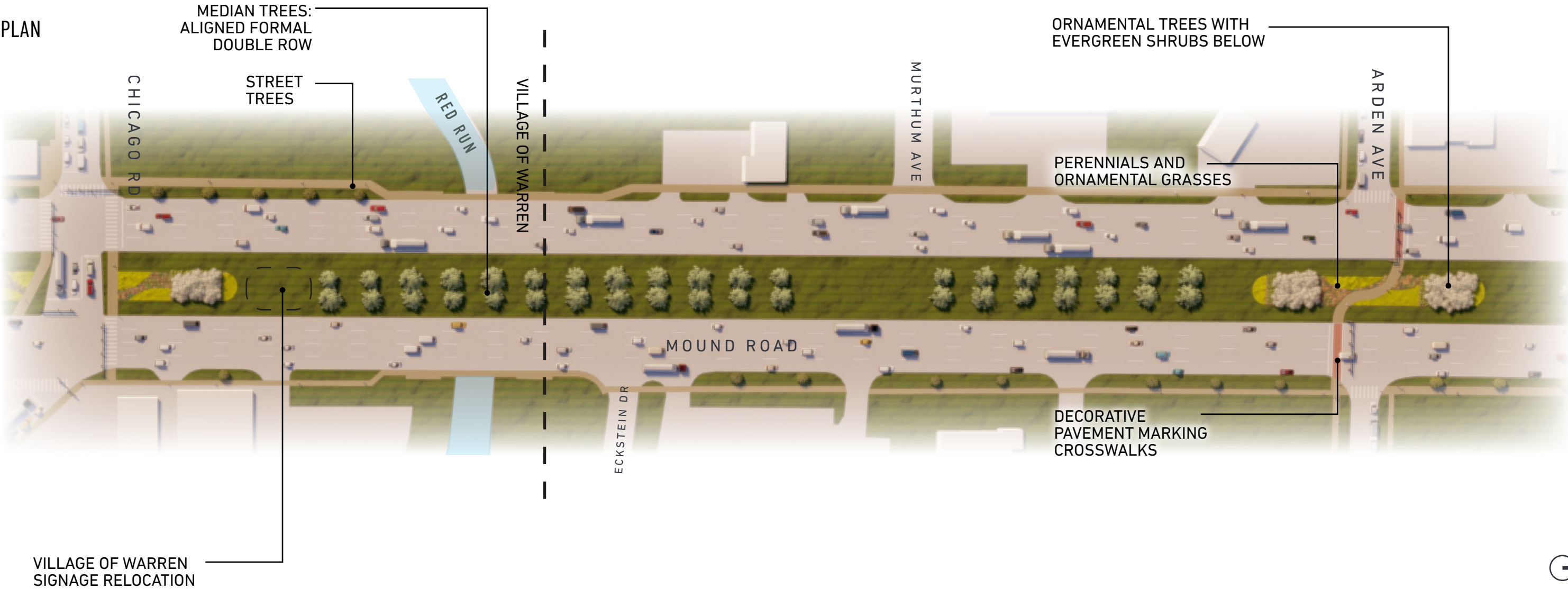


ARDEN AVENUE  
PEDESTRIAN CROSSING

The Arden Avenue intersection treatment will be distinct from the enhanced pedestrian crossings throughout the rest of the corridor due to the updated traffic pattern. This location is also an opportunity to create a branded aesthetic for the Warren Village area.



PLAN





PLANT LIST

STREET TREES
<i>Acer buergerianum</i> Trident Maple
<i>Carpinus caroliniana</i> American Hornbeam
<i>Crataegus phaenopyrum</i> Washington Hawthorn
<i>Gleditsia triacanthos 'Impcole'</i> Imperial Honeylocust
<i>Syringa reticulata</i> Japanese Lilac Tree
<i>Zelkova serrata</i> City Sprite Zelkova
MEDIAN TREES
<i>Liquidambar styraciflua 'Rotundaloba'</i> Fruitless Sweetgum
<i>Quercus palustris</i> Pin Oak
<i>Tilia cordata</i> Little Leaf Linden
SHRUBS & ORNAMENTAL TREES
<i>Amelanchier</i> Serviceberry
<i>Cercis canadensis</i> Eastern Redbud
<i>Pinus mugo</i> Mugo Pine
<i>Pinus mugo'</i> Dwarf Mugo Pine
<i>Taxus x media 'Everlow'</i> Everlow Yew
GRASSES
<i>Bouteloua curtipendula</i> Blonde Ambition Sideoats Grama
<i>Pennisetum orientale 'Karley Rose'</i> Karley Rose Fountain Grass
PERENNIALS
<i>Hemerocallis 'Purple de Oro'</i> Purple D'oro Daylily
<i>Narcissus</i> Daffodils
<i>Perovskia atriplicifolia</i> Dwarf Russian Sage
<i>Salvia sylvestris 'May Night'</i> May Night Salvia
<i>Veronica</i> Spike Speedwell



*Acer buergerianum*  
Trident Maple



*Carpinus caroliniana*  
American Hornbeam



*Crataegus phaenopyrum*  
Washington Hawthorne



*Gleditsia triacanthos 'Impcole'*  
Imperial Honeylocust



*Liquidambar styraciflua 'Rotundaloba'*  
Fruitless Sweetgum



*Quercus palustris*  
Pin Oak



*Tilia cordata*  
Little Leaf Linden



*Bouteloua curtipendula*  
Blonde Ambition Sideoats Grama



*Pennisetum orientale 'Karley Rose'*  
Karley Rose Fountain Grass



*Hemerocallis 'Purple de Oro'*  
Purple D'oro Daylily



*Pinus mugo*  
Dwarf Mugo Pine



*Perovskia atriplicifolia* Little Spire  
Dwarf Russian sage

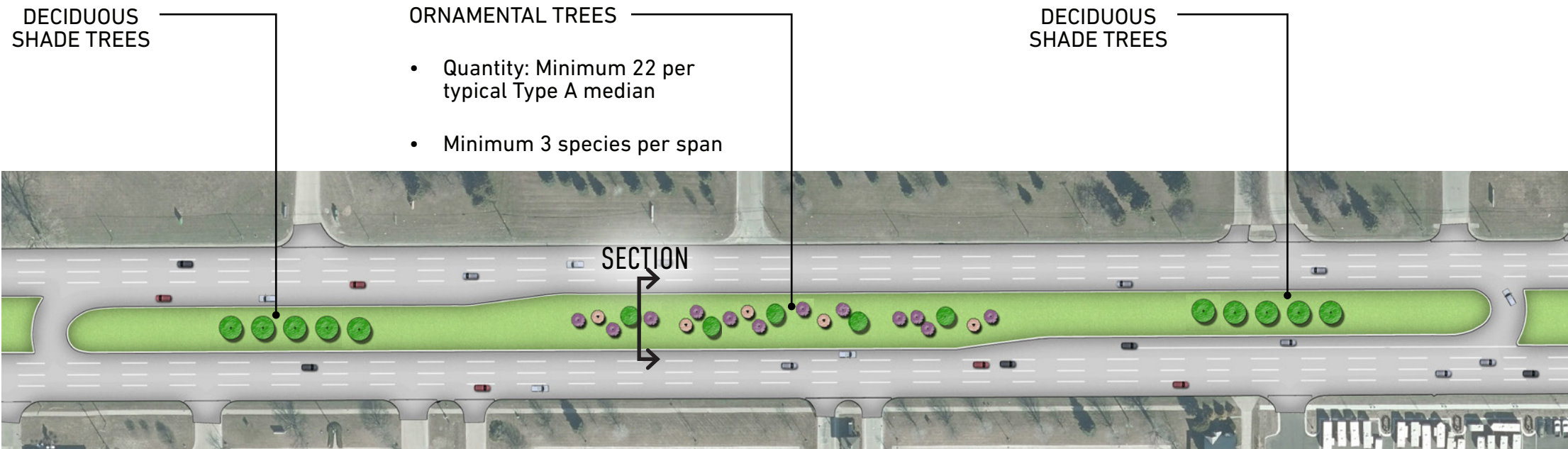


LANDSCAPE REQUIREMENTS

(FUTURE CONTRACT)

PLANTING REQUIREMENTS
<b>Deciduous trees:</b> Minimum 2.5 in. caliper, B&B
<b>Evergreen trees:</b> Minimum 6 ft. height, B&B
<b>Ornamental trees:</b> Minimum 2 in. caliper, or 7 ft. height
<b>Deciduous &amp; evergreen shrubs:</b> Minimum #3 container size, or equivalent B&B size
<b>Perennials:</b> Minimum #1 container size
<b>Ornamental grasses:</b> Minimum #1 container size
<b>Seeded lawn:</b> See specifications
SOILS REQUIREMENTS
<b>Turf:</b> Strip and stockpile topsoil, Section 815.03 of the 2012 Standard Specifications of Construction.amend and install per specifications, section 205.03.A.1 of the 2012 Standard Specifications of Construction. Utilize seeding mixture THM for slope restoration. All topsoil shall be screened.
<b>Plant bed:</b> 8 in. depth amended topsoil, Section 815.03 of the 2012 Standard Specifications of Construction.
MAINTENANCE REQUIREMENTS
<b>Duration:</b> 2 years
<b>Maintenance needed:</b> Watering and cultivating in accordance with Section 815.03.J of the 2012 Standard Specifications for Construction
<ul style="list-style-type: none"><li>• Trees</li><li>• Perennials</li><li>• Ornamental Grasses</li></ul>

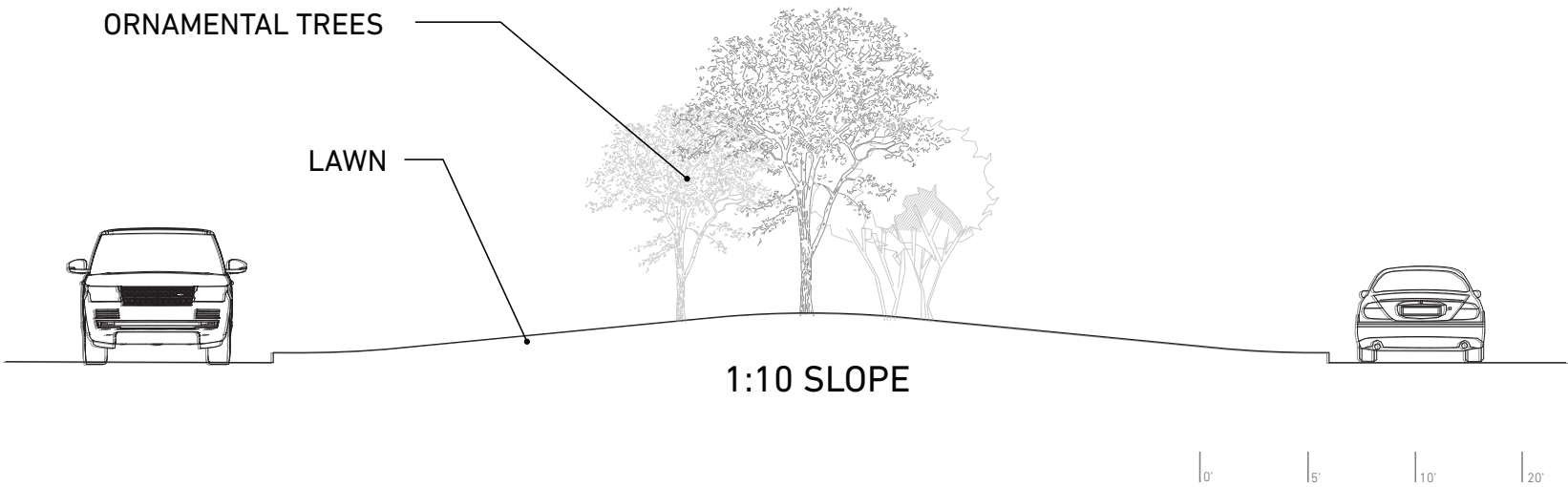
TYPICAL LANDSCAPE PLAN



This median typology emphasizes the blooms and colors of spring. Ornamental trees are arranged in organic masses along the center of the median span. Several large shade trees, with striking autumn color, are set in a row at each end of the stretch.



SECTION







PLANT LIST

TREES
<i>Acer × freemanii</i> Autumn Blaze Maple
<i>Acer rubrum</i> ‘franksred’ Red Sunset Maple
<i>Gleditsia triacanthos form inermis</i> Thornless Honeylocust
<i>Liquidambar styraciflua</i> Fruitless Sweetgum
<i>Quercus rubra</i> Red Oak
SHRUBS & ORNAMENTAL TREES
<i>Amelanchier</i> Serviceberry
<i>Cercis canadensis</i> Eastern Redbud
<i>Cornus alternifolia</i> Alternateleaf Dogwood
<i>Cornus florida</i> Flowering Dogwood
<i>Crataegus</i> Hawthorne
<i>Linnaea amabilis</i> Beauty Bush
<i>Malus Spring Snowii</i> Crab Apple
<i>Prunus cerasifera</i> Pruple Leaf Plum / Wild Plum
<i>Viburnum plicatum</i> Doublefile viburnum
<i>Viburnum prunifolium</i> Blackhaw viburnum



*Acer × freemanii*  
Autumn Blaze Maple



*Acer rubrum* ‘franksred’  
Red Sunset Maple



*Gleditsia triacanthos form inermis*  
Thornless Honey Locust



*Liquidambar styraciflua*  
Sweetgum



*Quercus rubra*  
Red Oak



*Amelanchiar*  
Serviceberry



*Cornus alternifolia*  
Alternateleaf Dogwood /Pagoda Dogwood



*Crataegus*  
Hawthorne



*Malus Spring Snowii*  
Spring Snow Crabapple



*Prunus cerasifera* *Malus Spring Snowii*  
Pruple Leaf Plum / Wild Plum



*Viburnum plicatum*  
Doublefile Viburnum



*Viburnum prunifolium*  
Blackhaw Viburnum

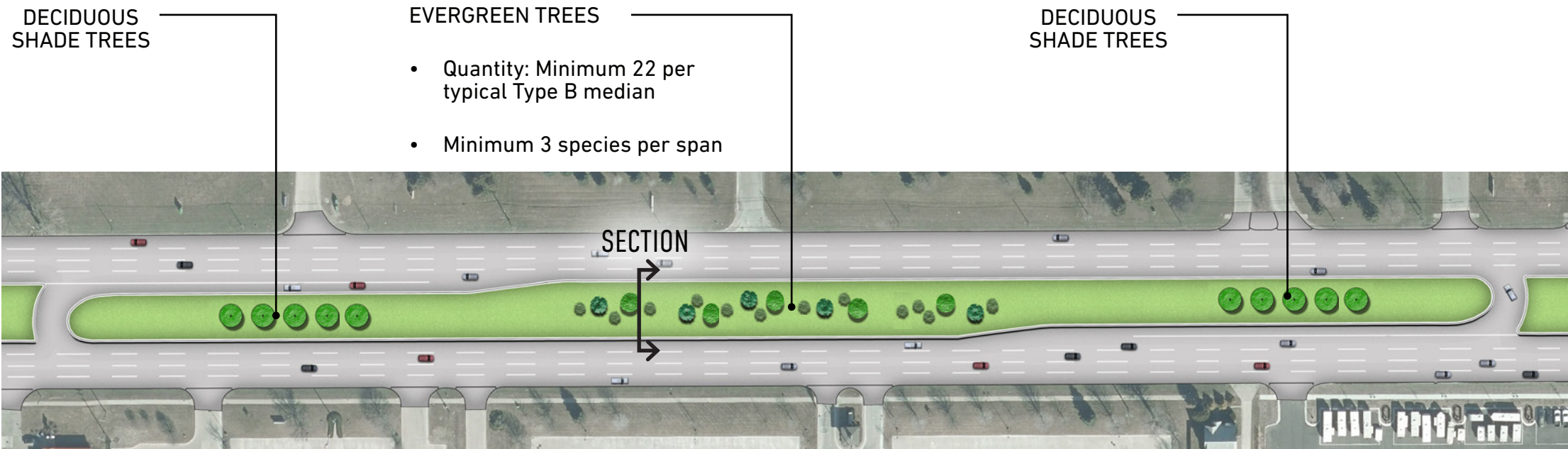


LANDSCAPE REQUIREMENTS

(FUTURE CONTRACT)

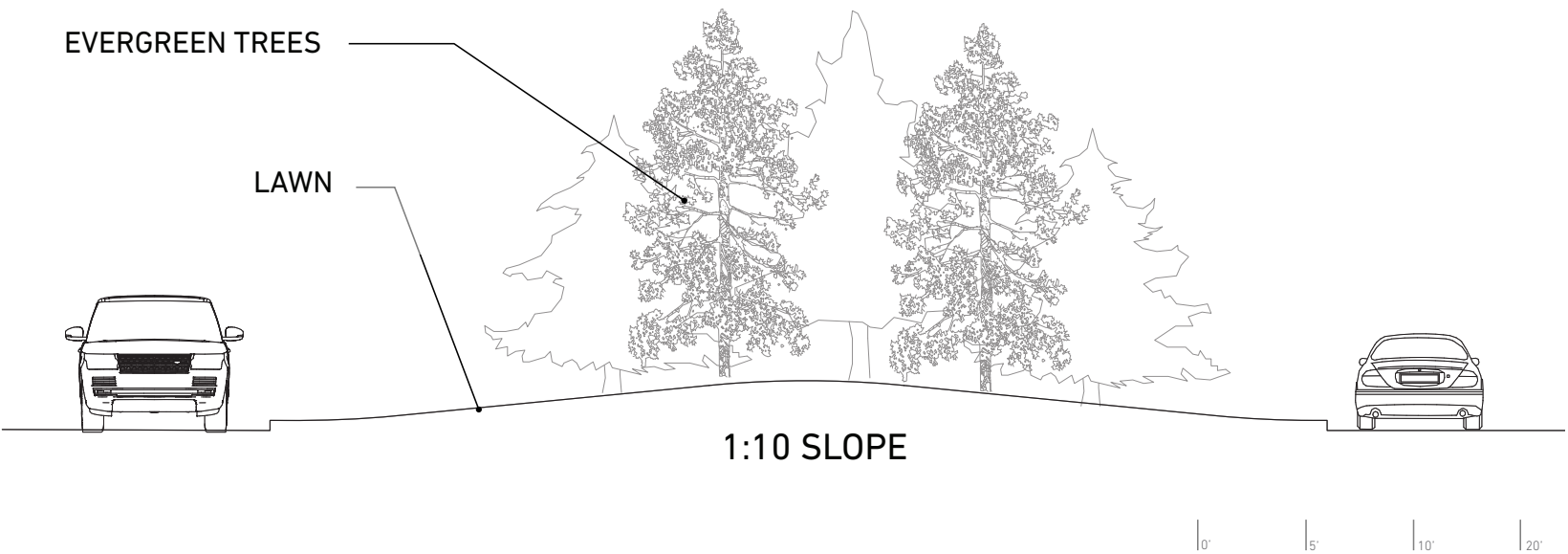
PLANTING REQUIREMENTS
<b>Deciduous trees:</b> Minimum 2.5 in. caliper, B&B
<b>Evergreen trees:</b> Minimum 6 ft. height, B&B
<b>Ornamental trees:</b> Minimum 2 in. caliper, or 7 ft. height
<b>Deciduous &amp; evergreen shrubs:</b> Minimum #3 container size, or equivalent B&B size
<b>Perennials:</b> Minimum #1 container size
<b>Ornamental grasses:</b> Minimum #1 container size
<b>Seeded lawn:</b> See specifications
SOILS REQUIREMENTS
<b>Turf:</b> Strip and stockpile topsoil, Section 815.03 of the 2012 Standard Specifications of Construction.amend and install per specifications, section 205.03.A.1 of the 2012 Standard Specifications of Construction. Utilize seeding mixture THM for slope restoration. All topsoil shall be screened.
<b>Plant bed:</b> 8 in. depth amended topsoil, Section 815.03 of the 2012 Standard Specifications of Construction.
MAINTENANCE REQUIREMENTS
<b>Duration:</b> 2 years
<b>Maintenance needed:</b> Watering and cultivating in accordance with Section 815.03.J of the 2012 Standard Specifications for Construction <ul style="list-style-type: none"><li>• Trees</li><li>• Perennials</li><li>• Ornamental Grasses</li></ul>

TYPICAL LANDSCAPE PLAN



Evergreens comprise most of this typology. Pines, spruces, and other coniferous species will continue to create interest in winter. Several large shade trees, with striking autumn color, are set in a row at each end of the stretch.

SECTION







PLANT LIST

TREES
<i>Acer × freemanii</i> Autumn Blaze Maple
<i>Acer rubrum</i> ‘franksred’ Red Sunset Maple
<i>Gleditsia triacanthos form inermis</i> Thornless Honeylocust
<i>Liquidambar styraciflua</i> Fruitless Sweetgum
<i>Quercus rubra</i> Red Oak
EVERGREEN TREES
<i>Abies balsamea</i> Balsam Fir
<i>Abies concolor</i> White Fir
<i>Juniperus communis</i> Common juniper
<i>Juniperus virginiana</i> Eastern Red Cedar
<i>Picea glauca</i> White Spruce
<i>Pinus banksiana</i> Jack Pine
<i>Pinus strobus</i> Eastern White Pine



*Acer × freemanii*  
Autumn Blaze Maple



*Acer rubrum* ‘franksred’  
Red Sunset Maple



*Gleditsia triacanthos form inermis*  
Thornless Honey Locust



*Liquidambar styraciflua*  
Sweetgum



*Quercus rubra*  
Red Oak



*Abies balsamea*  
Balsam fir



*Abies concolor*  
White fir



*Juniperus communis*  
Common Juniper



*Juniperus virginiana*  
Eastern Red Cedar



*Picea glauca*  
White Spruce



*Pinus banksiana*  
Jack Pine



*Pinus strobus*  
Eastern White Pine