



Mound Road Industrial Corridor Technology  
and Innovation Project in  
Macomb County

**INNOVATE MOUND**

**HNTB**

**CMGC Industry Forum**

**August 25, 2022**

Michigan Department of Transportation



# **INNOVATE MOUND** Introduction and Logistics

---

- Welcome
- Please add company, name, address, email, and phone number to chat
- Presenter Introductions
- Meeting Logistics and Protocol
  - Please mute your line during the presentation
  - If you have questions during the presentation, please submit them via the chat feature
  - All questions will be addressed at the end of the presentation
  - Please use the “Raise Hand” feature if you have a question during the open Q&A
  - This meeting will be recorded for future use

# ***INNOVATE* MOUND** Agenda

---

- Project Overview/Scope
- Aesthetic Design Guide
- Project Budget
- Schedule
- Requirements
- SOQ Format, Content, and Scoring
- Q&A

# INNOVATE MOUND Project Overview

## MACOMB COUNTY DEPARTMENT OF ROADS

- Bryan Santo – Director  
[bsanto@rcmcweb.org](mailto:bsanto@rcmcweb.org)
- John Crumm – Project Manager  
[jcrumm@rcmcweb.org](mailto:jcrumm@rcmcweb.org)
- Dennis Cooper - Construction Manger  
[dcooper@rcmcweb.org](mailto:dcooper@rcmcweb.org)

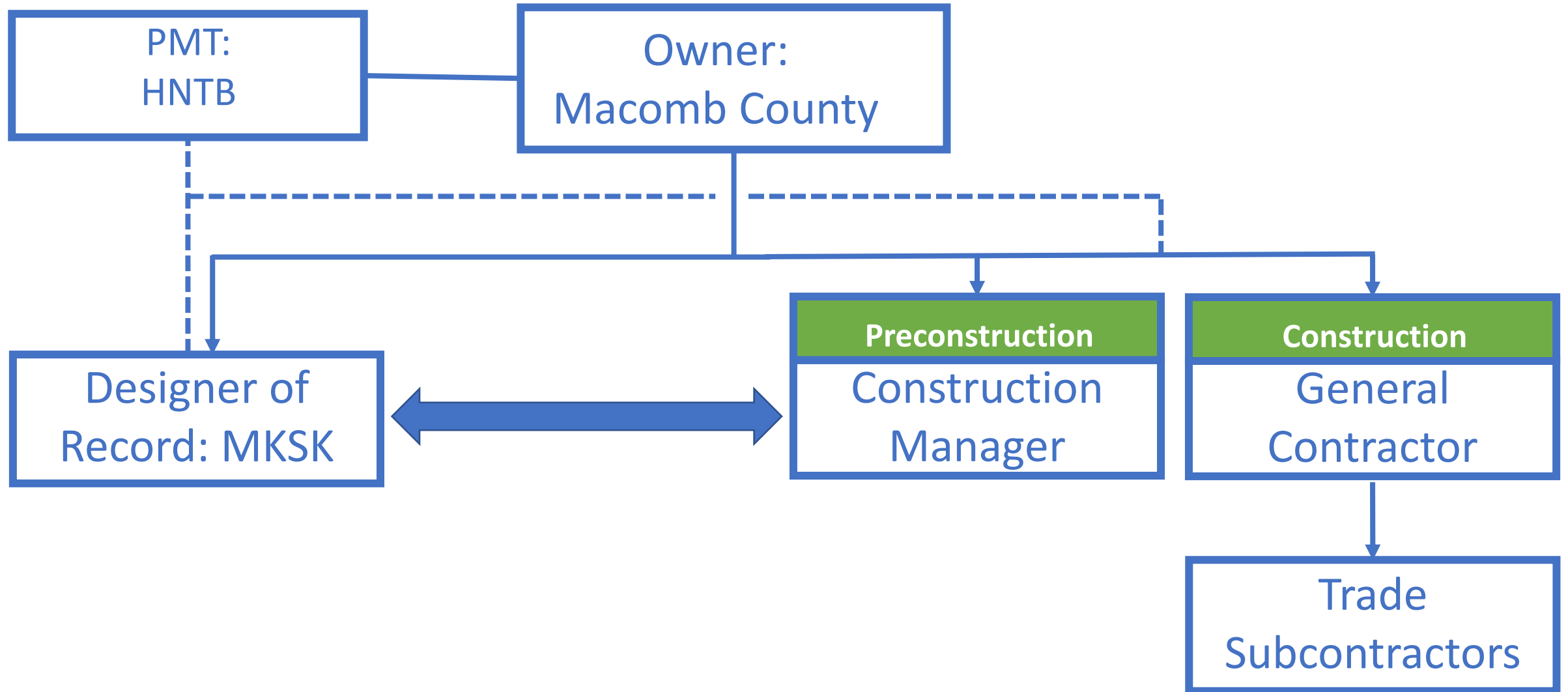
## LOCAL PARTNERS

- City of Warren
- City of Sterling Heights

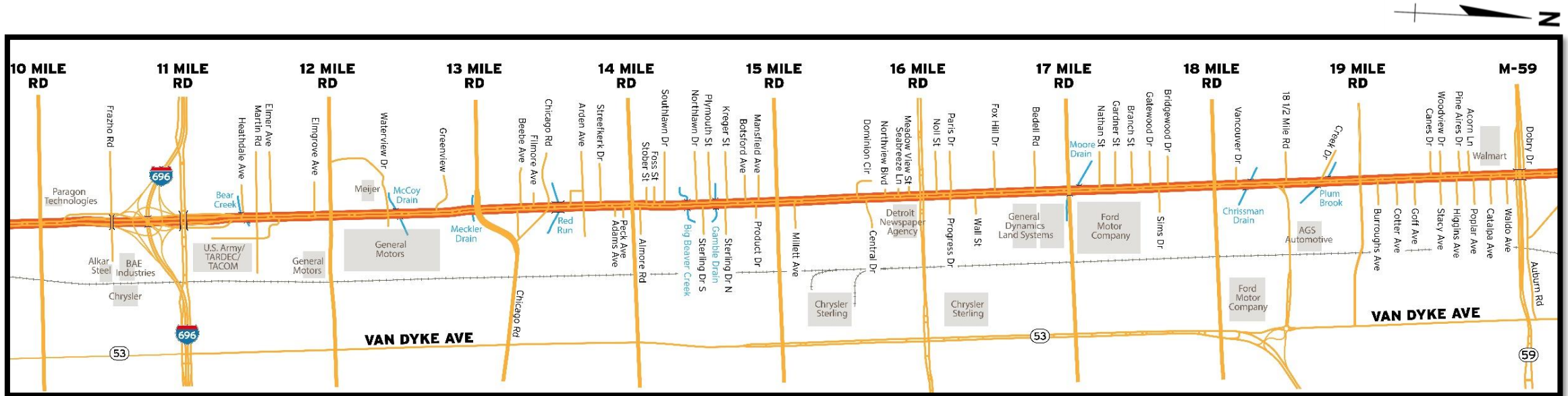
## PROJECT MANAGEMENT TEAM CONSULTANT

- Steve Griffith (HNTB) – Project Manager  
[sgriffith@hntb.com](mailto:sgriffith@hntb.com)
- Ron Davis(HNTB) – CMGC Manager  
[rodavis@hntb.com](mailto:rodavis@hntb.com)
- Ryan Sarmiento (HNTB) – CEI Manager  
[rsarmiento@hntb.com](mailto:rsarmiento@hntb.com)

# INNOVATE MOUND Project Overview



# INNOVATE MOUND Project Overview



- Reconstruction from Bear Creek to M-59 (Design-Builder)
- Widening from 17 Mile to M-59 (Design-Builder)
- CMGC scope is median landscaping & aesthetic treatment installation

# **INNOVATE MOUND** Project Scope

---

## Pre-award Services:

- Coordinate with Designer of Record through final design
- Coordinate with Design-Builder as necessary
- Advise on material selection, staging, or other considerations
- Prepare and negotiate an early and a final Guaranteed Maximum Price (GMP) within allotted budget

# **INNOVATE MOUND** Project Scope

---

## **Post-award Services:**

- Install landscaping and aesthetic treatments per contract documents

## **Establishment Period:**

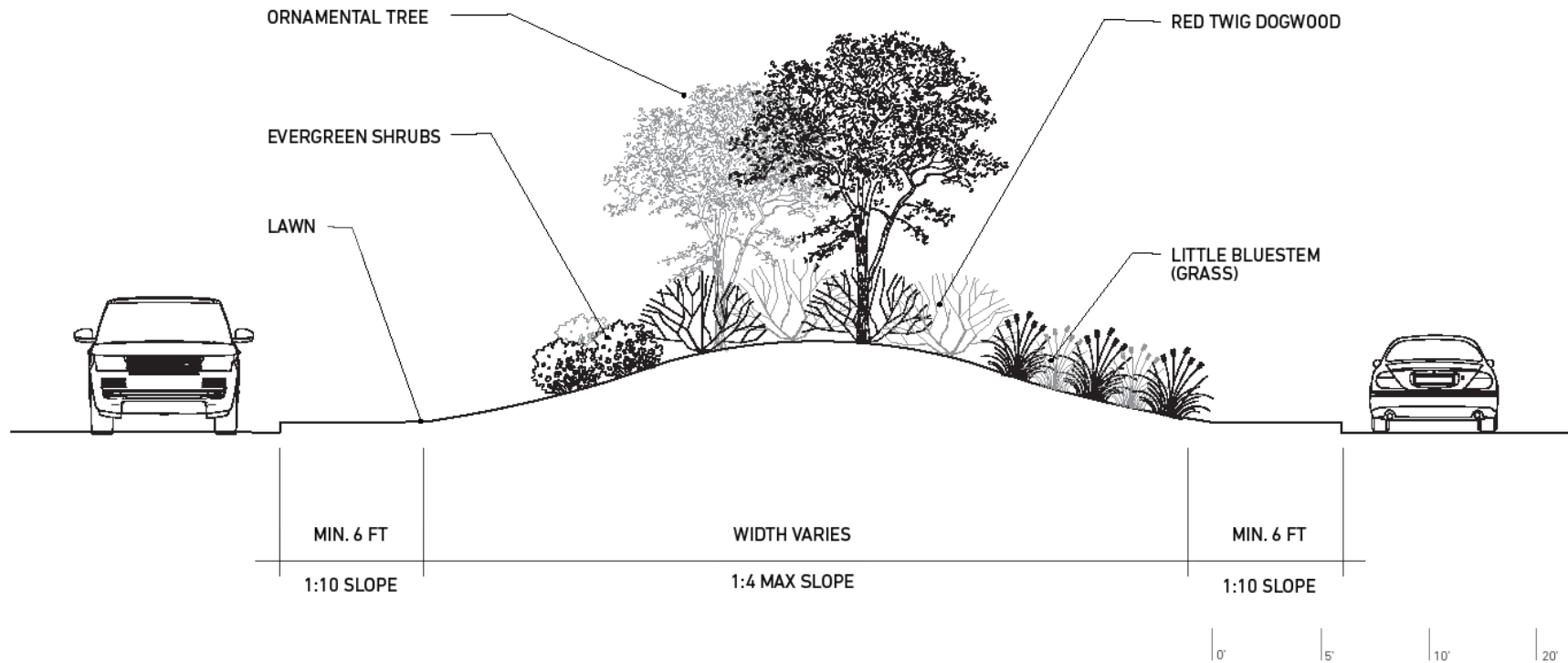
- Two-year watering and cultivating establishment period for all landscaping installed
- Northern section establishment period may extend through the end of the southern section establishment period



# INNOVATE MOUND Aesthetic Design Guide

## SECTION A

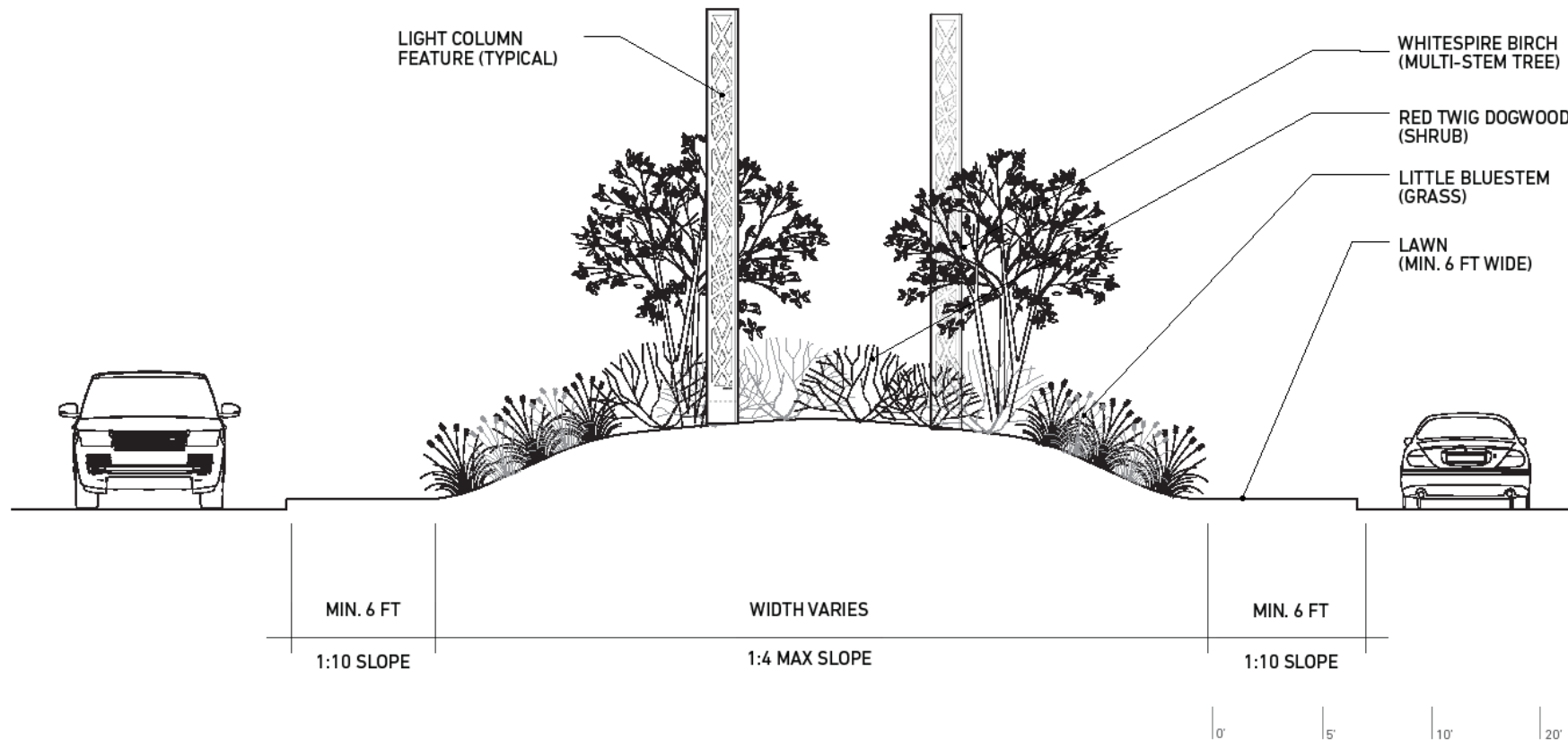
All column lighting, earthwork, and concrete work are being completed by the Design-Builder



# INNOVATE MOUND Aesthetic Design Guide

## SECTION B

All column lighting, earthwork, and concrete work are being completed by the Design-Builder



# **INNOVATE MOUND** Aesthetic Design Guide

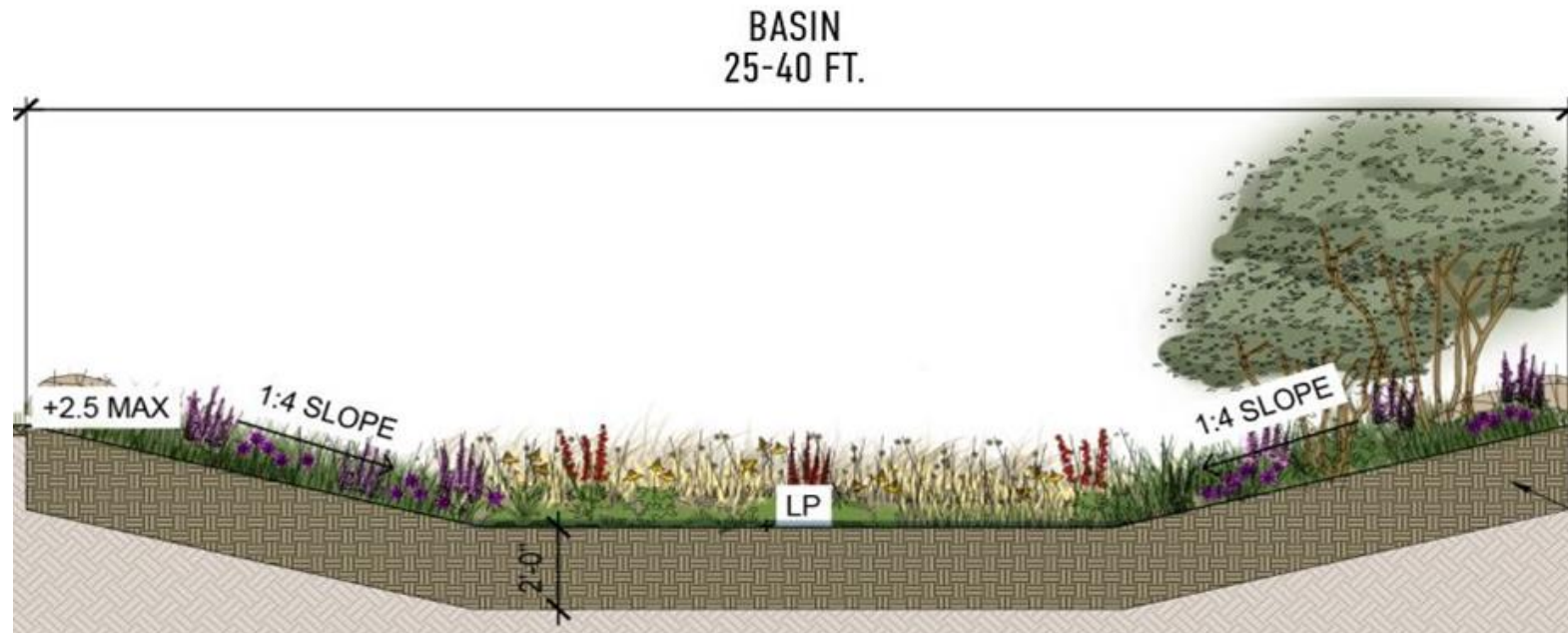
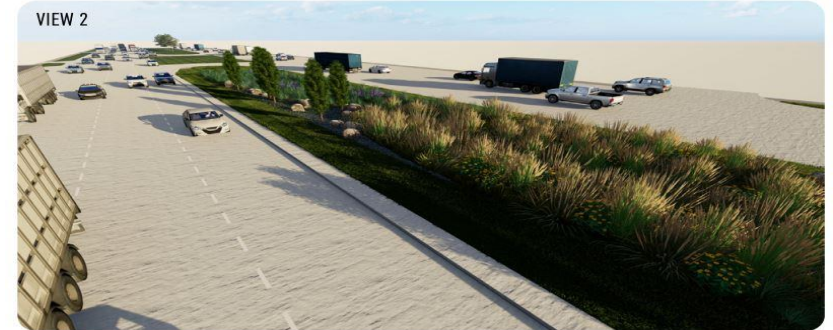
---

All column lighting, earthwork, and concrete work are being completed by the Design-Builder



# **INNOVATE MOUND** Detention Basins

- Eight (8) bioswale/detention basins locations
- Native to Michigan plant palette
- Tolerant of both wet and dry conditions
- Earthwork completed by design-builder



# ***INNOVATE* MOUND** Project Budget

---

- \$2.5 million estimated budget
  - Pre-award services
  - Post-award services
  - Establishment period
  
- Cost proposal is not required for submittal

# **INNOVATE MOUND** Schedule

Anticipated Milestones	Planned Completion
Post Request for Qualifications (RFQ)	September 6, 2022
Deadline for submitting RFQ questions	September 26, 2022
Statement of Qualifications (SOQ) due date	October 6, 2022
Selection of CMGC	October 17, 2022
Approval of Pre-Construction Cost Proposal/NTP	December 9, 2022
ICE and Preliminary GMP Review	January 24, 2023
Final GMP Price Approval	March 30, 2023
Construction Contract Award/NTP	March 31, 2023
Construction Season 1	October 2023
Construction Season 2	October 2024
Establishment Period	October 2026

# ***INNOVATE* MOUND** Proposer Requirements

---

- MDOT Prequalification 3300 H (Landscaping)
- Prime to self-perform minimum 40% of work
- No DBE requirement

# **INNOVATE MOUND** SOQ Format

---

## **All Statements of Qualifications (SOQ's) must comply with the following:**

1. Bookmarked PDF
2. 14 MB maximum allowable file size
3. 12-page limit (not including appendices and forms)
4. 8.5 inches by 11 inches page size
5. Minimum 12-point font. Tables and graphics may use 10-point font.
6. All pages must be numbered continuously throughout and in the format of "Page 1 of \_", including resumes, 1300EZ forms, and legal understanding.
7. Graphics are allowed within established page limits. Text used on graphics must be legible and shall be used to describe the contents of the graphic.
8. Additional SOQ requirements can be found in the RFQ.



# **INNOVATE MOUND** SOQ Content

---

## Content of SOQ Includes:

- Introduction (Pass/Fail)
- Understanding of Project
- Qualifications of Team
  - Organization of project team
  - Project Team Communication
  - Key Personnel
- Experience & Past Performance
- Legal and Financial (Pass/Fail)
  - Organizational Conflicts of Interest
  - Legal Structure
  - Financial Viability

# **INNOVATE MOUND** SOQ Scoring

---

MCDR will evaluate all responsive SOQs and measure each Submitter's response against the Project goals and evaluation criteria set forth in this RFQ, resulting in a numerical score for each SOQ. The scoring will be distributed as described in the RFQ and summarized below:

1. Understanding of Project (20 Points)
2. Experience & Past Performance (25 Points) *Includes past budget performance*
3. Work Zone Safety (10 Points)
4. Schedule Management (5 Points)
5. Qualifications of Team (25 Points)
6. Innovations (10 Points)
7. Location (5 Points)

# **INNOVATE MOUND** SOQ Question & Answer Response

---

- RFQ Questions and Answers will be posted at:  
[InnovateMound.org/Landscaping-Project/](https://InnovateMound.org/Landscaping-Project/)

## **Reference Information Documents:**

- Design (30%) Concept Plans
- Aesthetic Design Guide
- Detention Pond Aesthetic Detail

\*Column lighting, earthwork, and concrete work are being completed by the Design-Builder.

\*Final roadway design-build plans will be provided to the selected CMGC.

# INNOVATE MOUND Questions



DRAFT