

COMMUNITY OPEN HOUSE

SEPTEMBER 2022





RESOURCES



Visit the website to view all the displays from the Innovate Mound 501 event and learn more about the project.

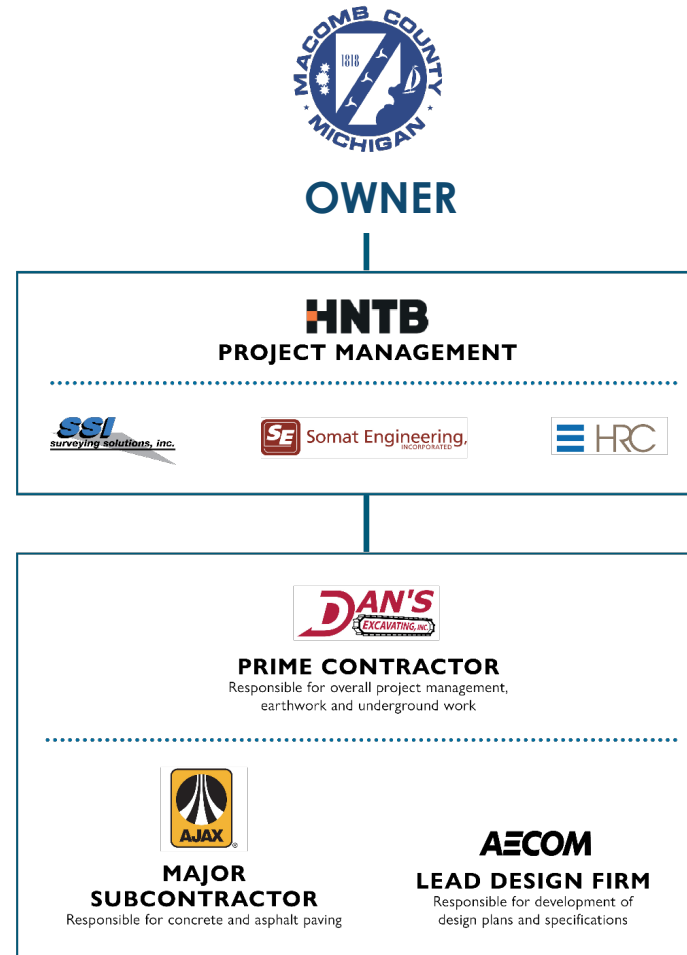
www.innovatemound.org

1-855-MOUND4U (668-6348)

Info@InnovateMound.org



DESIGN-BUILDER TEAM



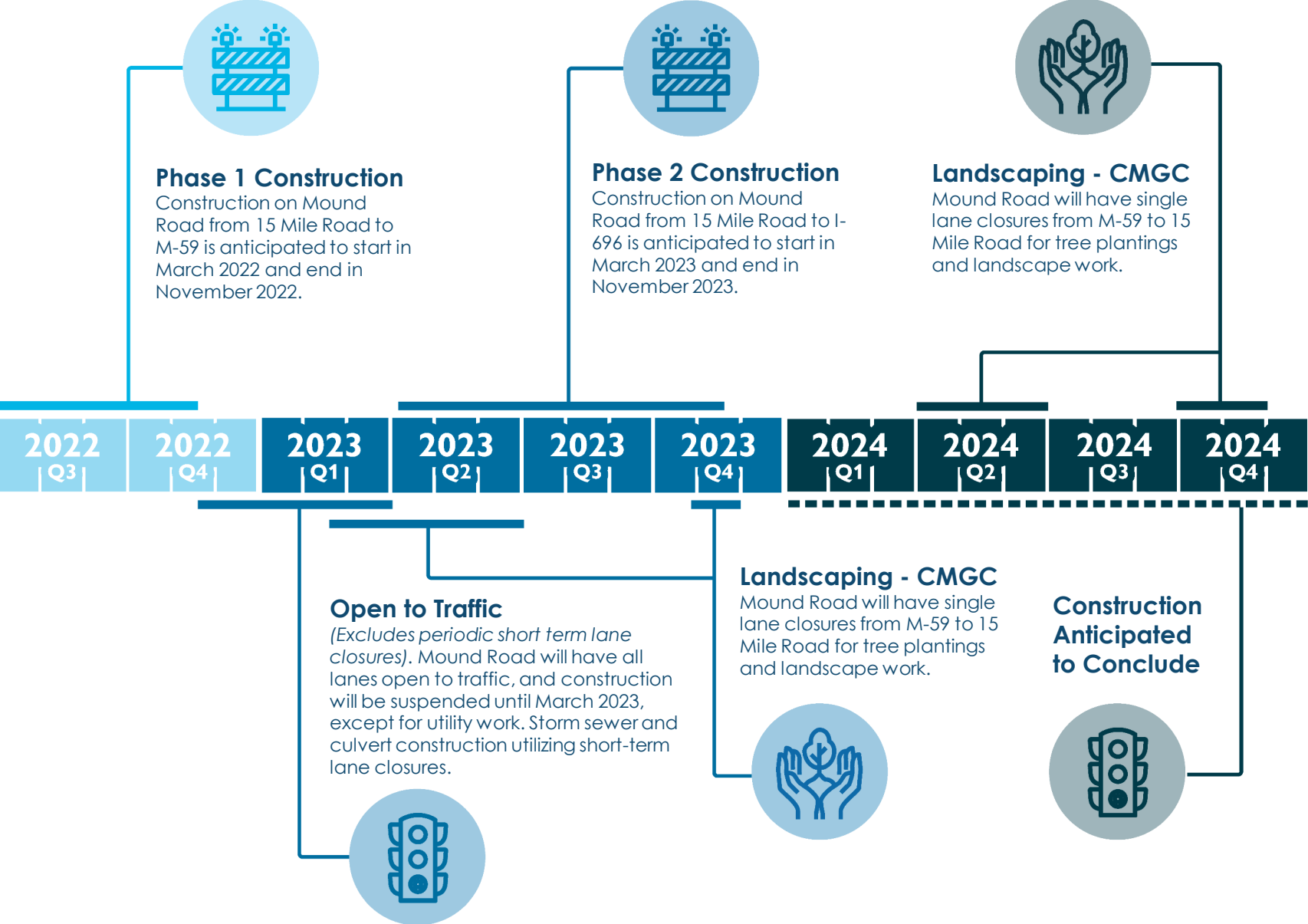
PROJECT PARTNERS



U.S. Department
of Transportation
**Federal Highway
Administration**



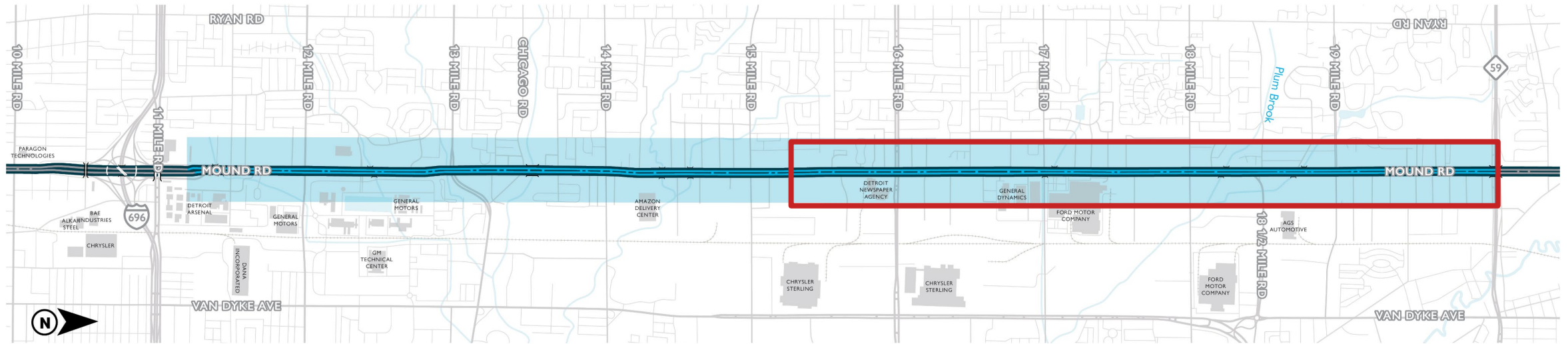
PROJECT TIMELINE





PERMANENT CONSTRUCTION LIMITS

2022 CONSTRUCTION ACTIVITY



FULL RECONSTRUCTION

Mound Road from 11 Mile Road to M-59



2022 PERMANENT CONSTRUCTION LIMITS

North of 15 Mile Road to M-59

Duration

March to December 2022

Major Intersections

19 Mile Road
18 1/2 Mile Road
18 Mile Road
17 Mile Road
16 Mile Road

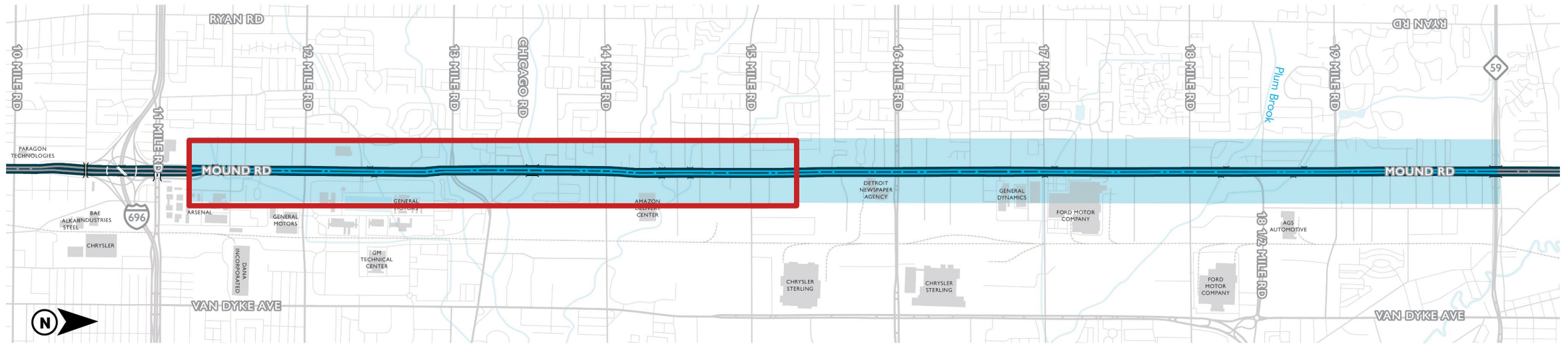
Construction Items

Concrete Paving
Permanent Traffic Signal Installation
Storm Sewer Installation
Water Main Installation
Storm Sewer and Sanitary Sewer Repairs
Construction of Median Detention Basins



TEMPORARY CONSTRUCTION LIMITS

2022 CONSTRUCTION ACTIVITY



FULL RECONSTRUCTION

Mound Road from 11 Mile Road to M-59



2022 TEMPORARY CONSTRUCTION LIMITS

North of I-696 to North of 15 Mile Road

Duration

August to December, 2022

Major Intersections

15 Mile Road
14 Mile Road
Chicago Road
13 Mile Road
12 Mile Road

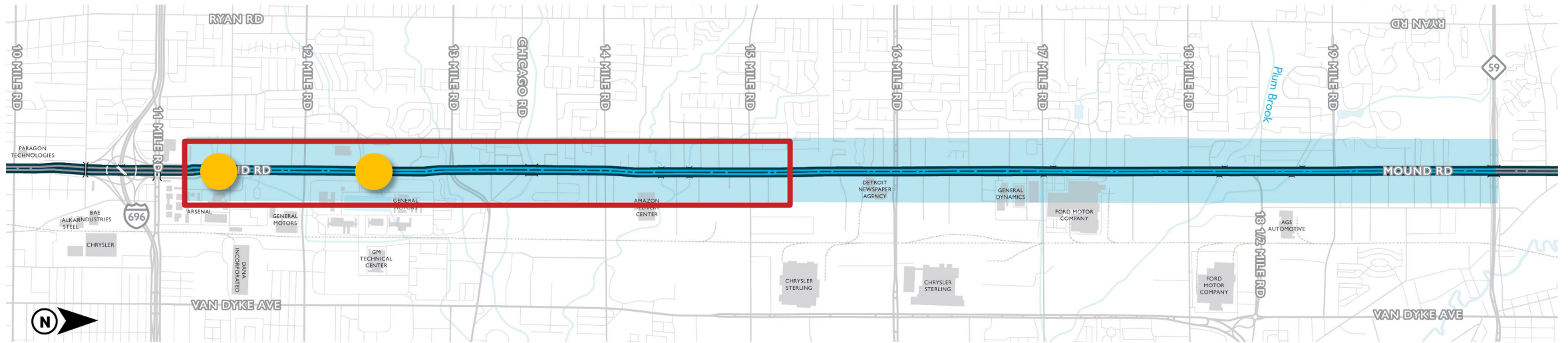
Construction Items

Temporary Widening of Mound Road for 2022 Construction
Temporary Traffic Signal Installation
Miscellaneous Storm Sewer Installation
Miscellaneous Water Main Installation
Miscellaneous Storm Sewer and Sanitary Sewer Repairs



PERMANENT CONSTRUCTION LIMITS

2023 CONSTRUCTION ACTIVITY



FULL RECONSTRUCTION

Mound Road from 11 Mile Road to M-59



2023 PERMANENT CONSTRUCTION LIMITS

North of 15 Mile Road to M-59



BRIDGE/CULVERT REPLACEMENT

Duration	March to December 2023 (Culvert work winter 2023)	Construction Items	Reconstruction and Widening of Mound Road for 2023 Construction Permanent Traffic Signal Installation Storm Sewer Installation Water Main Installation Storm Sewer and Sanitary Sewer Repairs Permanent Bridge/Culvert Work at Mound Road over Bear Creek and McCoy Drain
Major Intersections	15 Mile Road 14 Mile Road Chicago Road 13 Mile Road 12 Mile Road		
Bridge/Culvert Work	Mound over Bear Creek Mound over McCoy Drain		



BIOSWALE/BASIN CONSTRUCTION

MOUND ROAD FROM NORTH OF M-59 TO I-696

Typical Work Zone

- ▶ Reduce total volume of runoff
- ▶ Increase infiltration
- ▶ Improved water quality

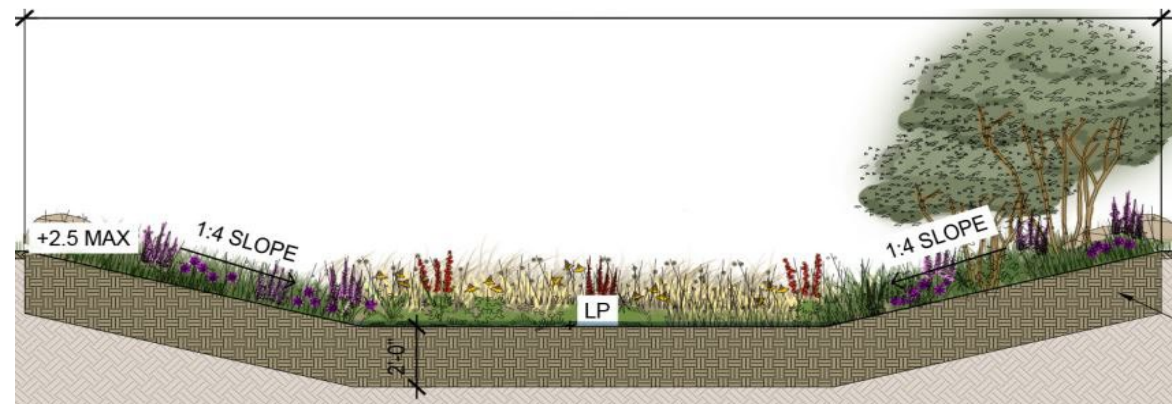
Nine (9) Bioswale/Basins

Location

- ▶ Native to Michigan plant palette
- ▶ Tolerant of both wet and dry conditions



BASIN
25-40 FT.





UTILITY RELOCATIONS & UPGRADES

MOUND ROAD FROM NORTH OF I-696 TO M-59

Municipal Utility Upgrades Sterling Heights & Warren

- ▶ Watermain upgrades
- ▶ Sanitary sewer upgrades

Private Utility Relocations

- ▶ DTE, Consumers, AT&T, Comcast, and Other Communication Companies
- ▶ Gas relocations (underground)
- ▶ Power relocations (overhead)
- ▶ Street lighting (overhead and underground)
- ▶ Communications (overhead and underground)





TRAFFIC SIGNALS AND INTELLIGENT TRANSPORTATION SYSTEMS

MOUND ROAD FROM NORTH OF I-696 TO M-59

Permanent Traffic Signals

- ▶ Mast arm signals at all project signals
- ▶ Box span configuration
- ▶ Painted black for a consistent corridor
- ▶ Adaptive traffic signal control

Intelligent Transportation Systems

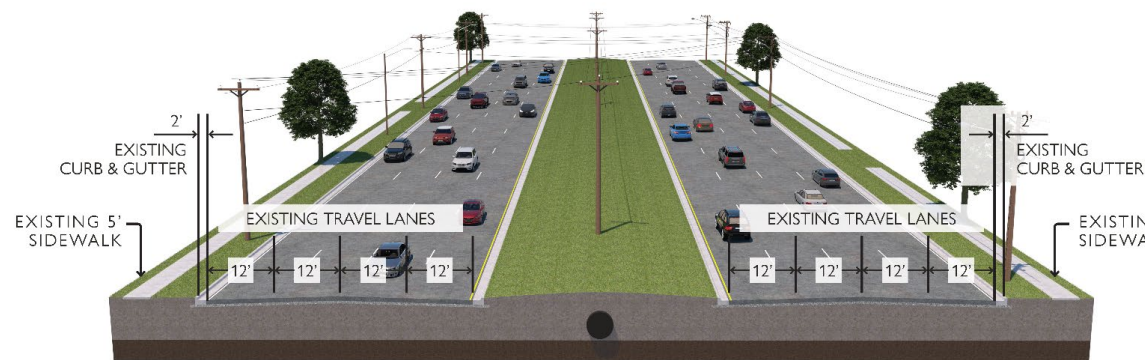
- ▶ Smart corridor with new infrastructure
- ▶ Multi-modal roadside units (RSU) deployment
- ▶ RWIS – atmospheric and pavement sensors
- ▶ WI-FI detectors
- ▶ Traffic monitoring cameras (CCTV)
- ▶ Data management system



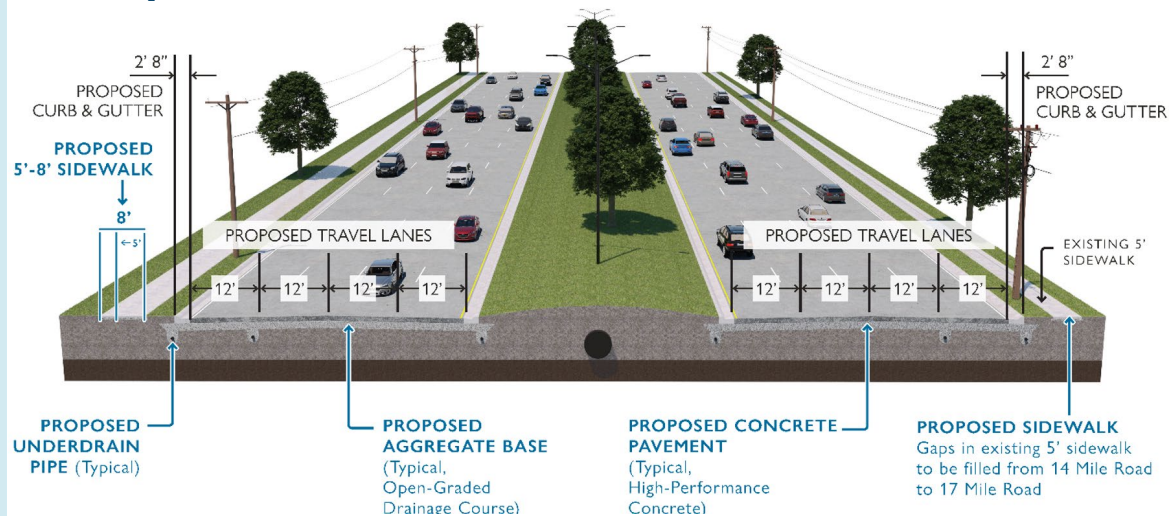
CROSS SECTIONS

I-696 to 17 Mile Road

Existing

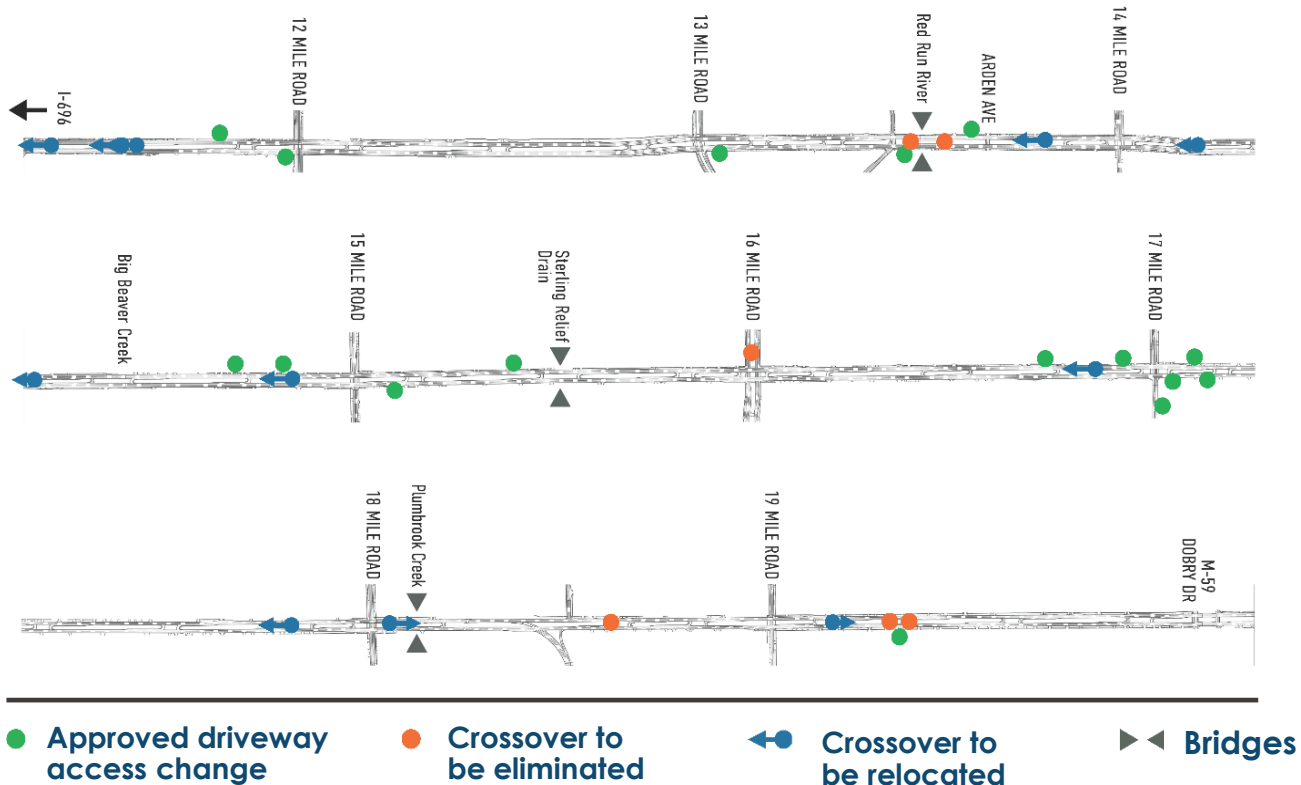


Proposed



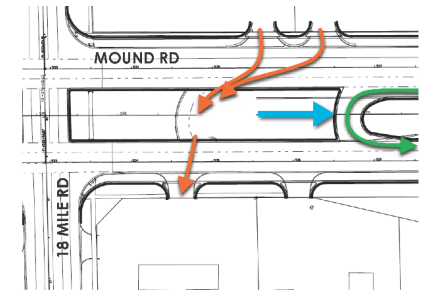
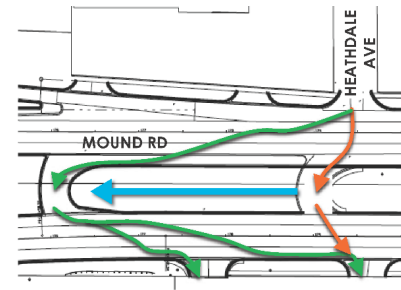
ACCESS MANAGEMENT

Crossover Changes



Crossover Change Examples

- ▶ Relocate Southbound-Northbound crossover at **HEATHDALE AVE.** further south of the intersection.
- ▶ Relocate Southbound-Northbound crossover **DIRECTLY NORTH OF 18 MILE RD.** further north.

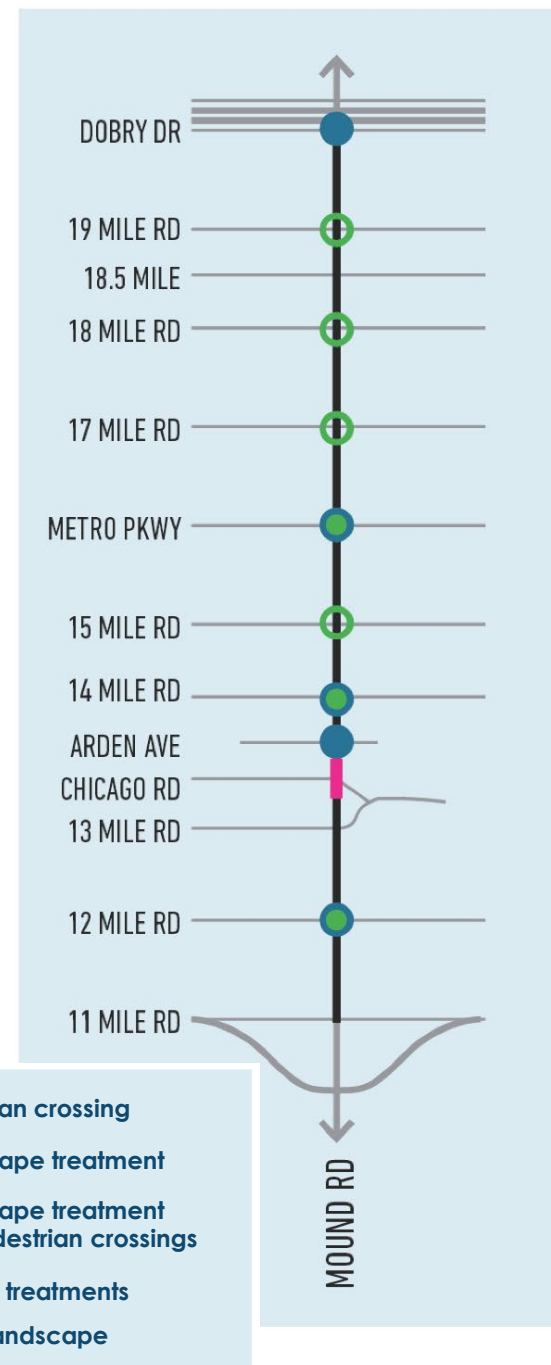
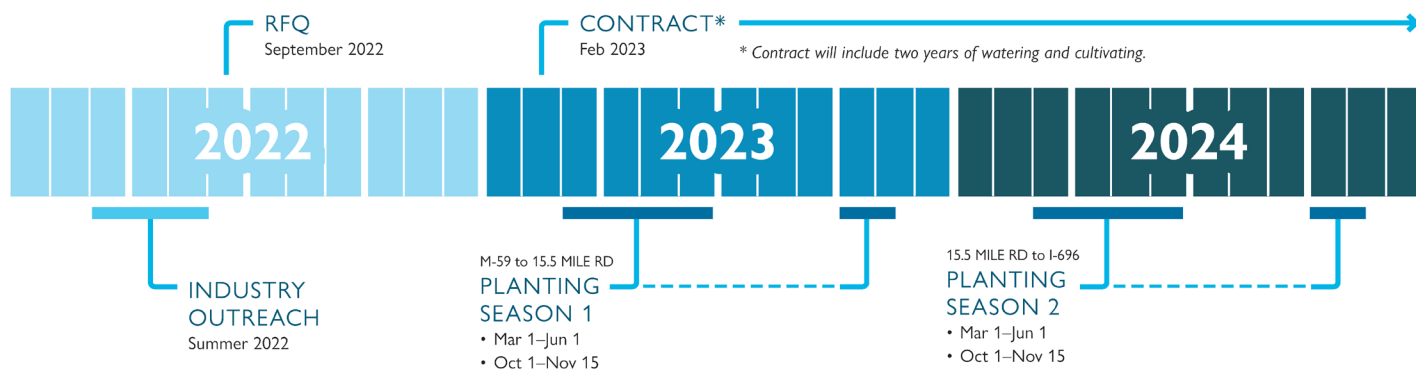


- Existing weaving conflict
- Crossover relocation
- Removal of weaving conflict with crossover relocation



AESTHETIC IMPROVEMENTS

- ▶ Aesthetic improvements include:
 - ▶ Village of Warren landscape
 - ▶ Perennials and ornamental grasses
 - ▶ Intersection landscape treatments
 - ▶ Enhanced planting
 - ▶ Lighting feature
- ▶ Enhanced pedestrian crossings
 - ▶ Colored crosswalks
- ▶ Median landscape treatments
 - ▶ Evergreen tree plantings
 - ▶ Ornamental tree plantings
- ▶ Aesthetic renderings available at innovatemound.org/501event





► Mound Road north of 15 Mile Road to M-59



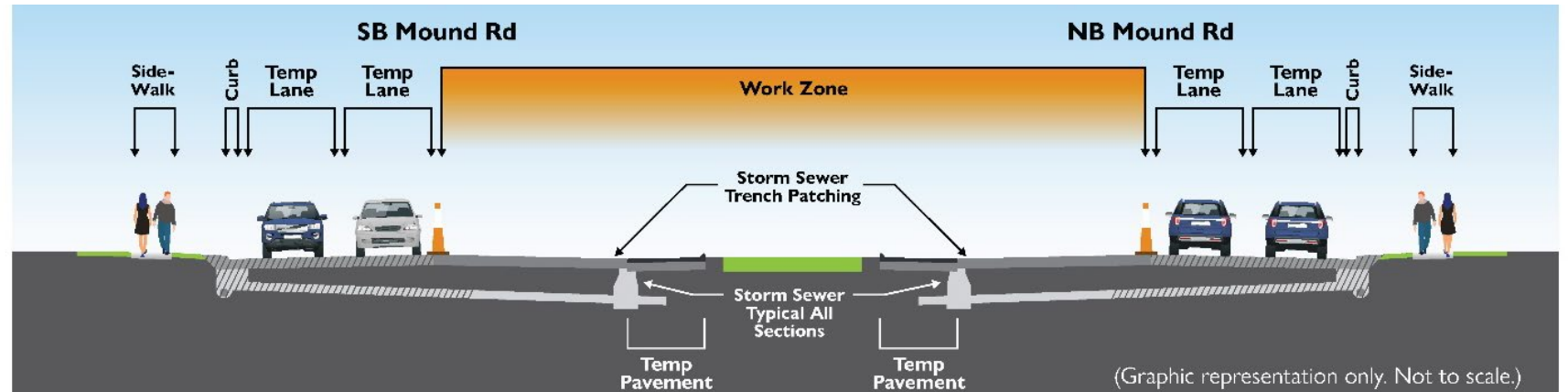
FALL/WINTER 2022-2023

TYPICAL WORK ZONE & WINTER CONFIGURATION

MOUND ROAD FROM I-696 TO NORTH OF 15 MILE

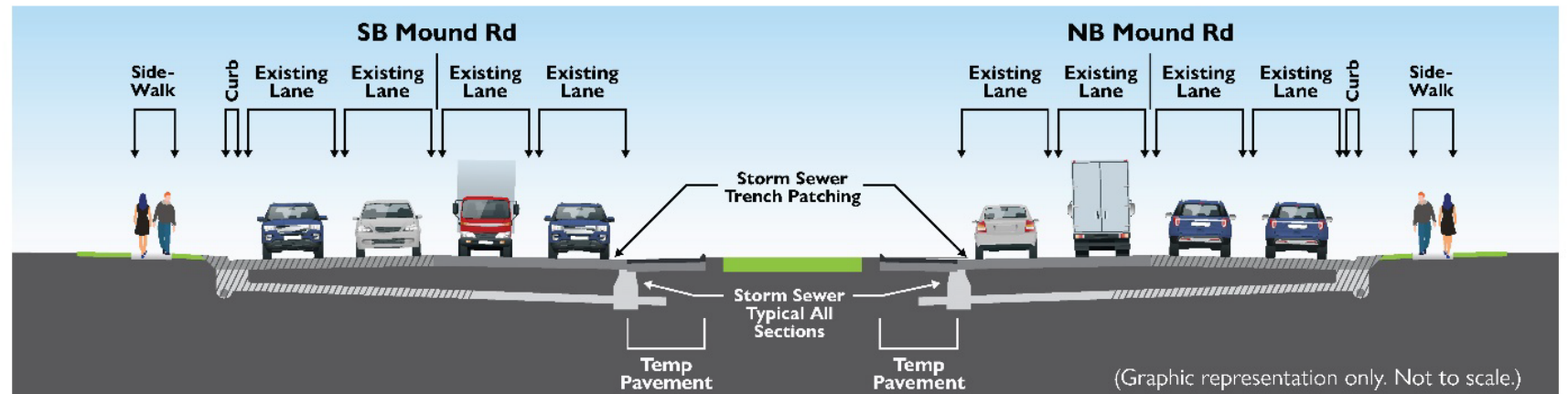
Typical Work Zone August – November

- Mound Road
I-696 to the north
of 15 Mile Road



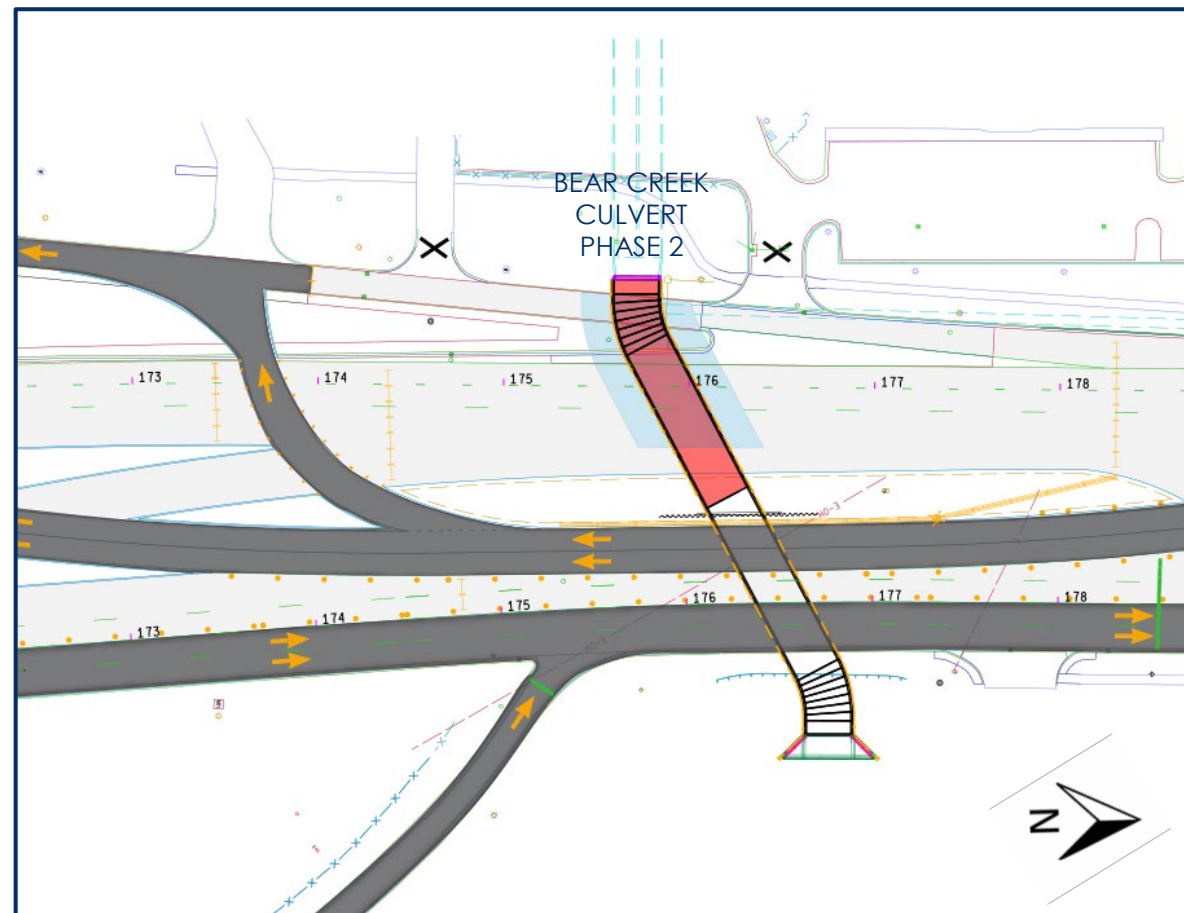
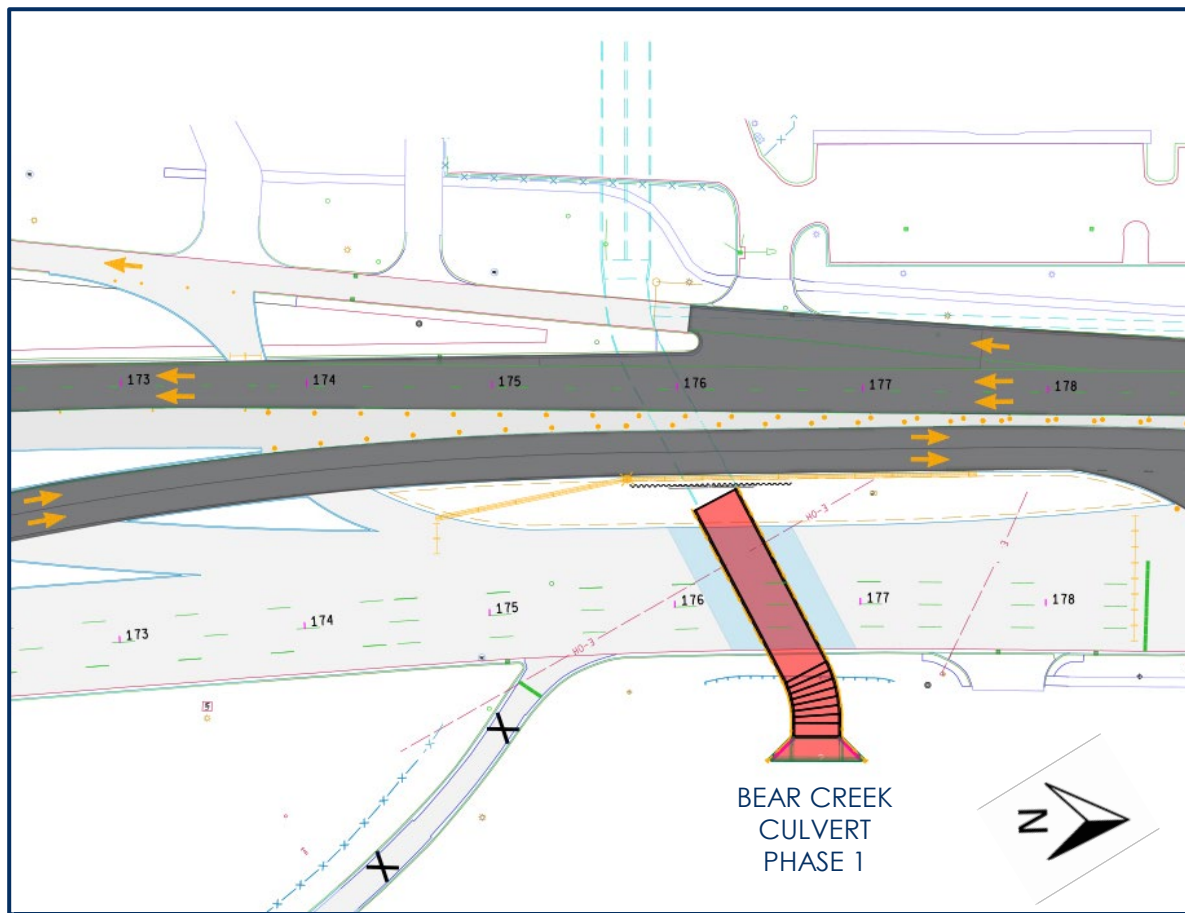
Winter Configuration

- Mound Road
I-696 to the north
of 15 Mile Road



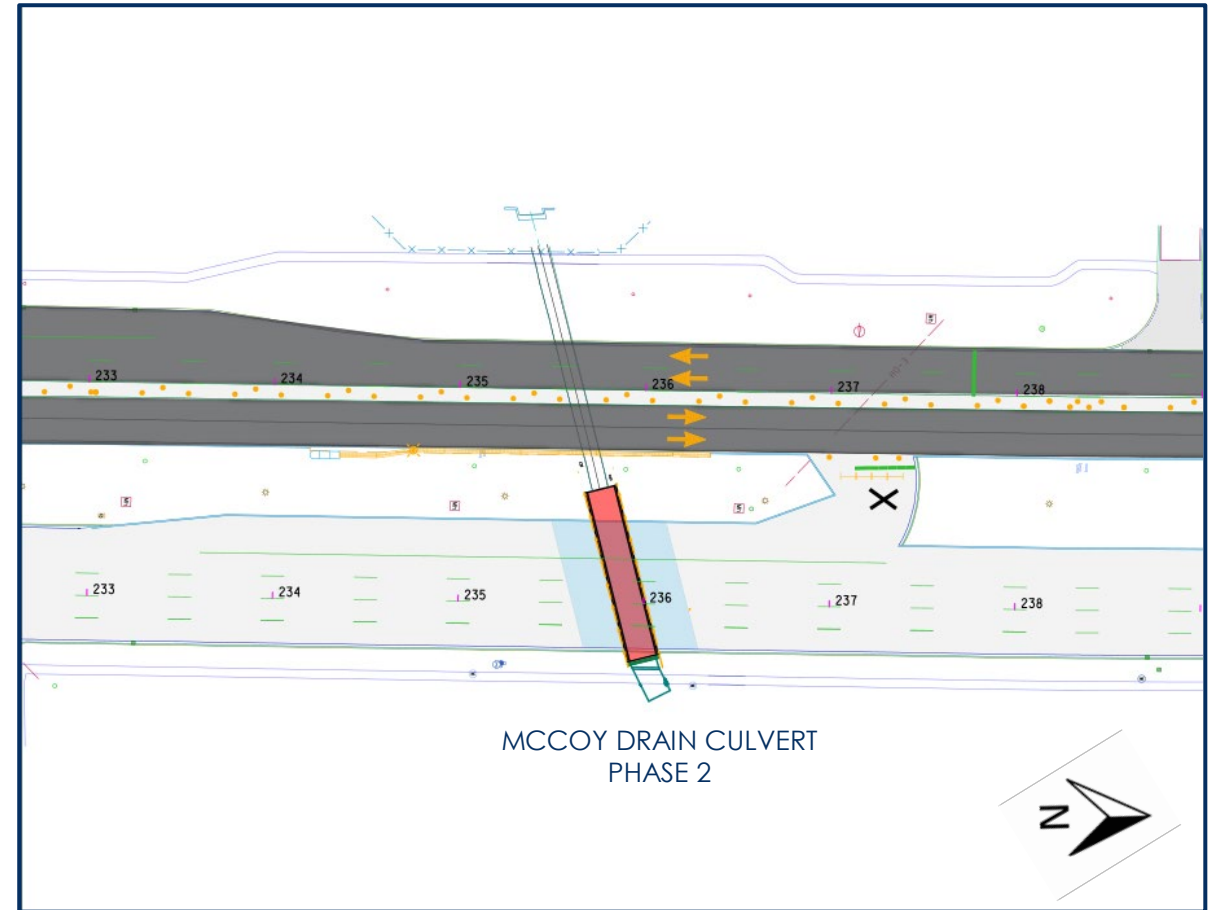
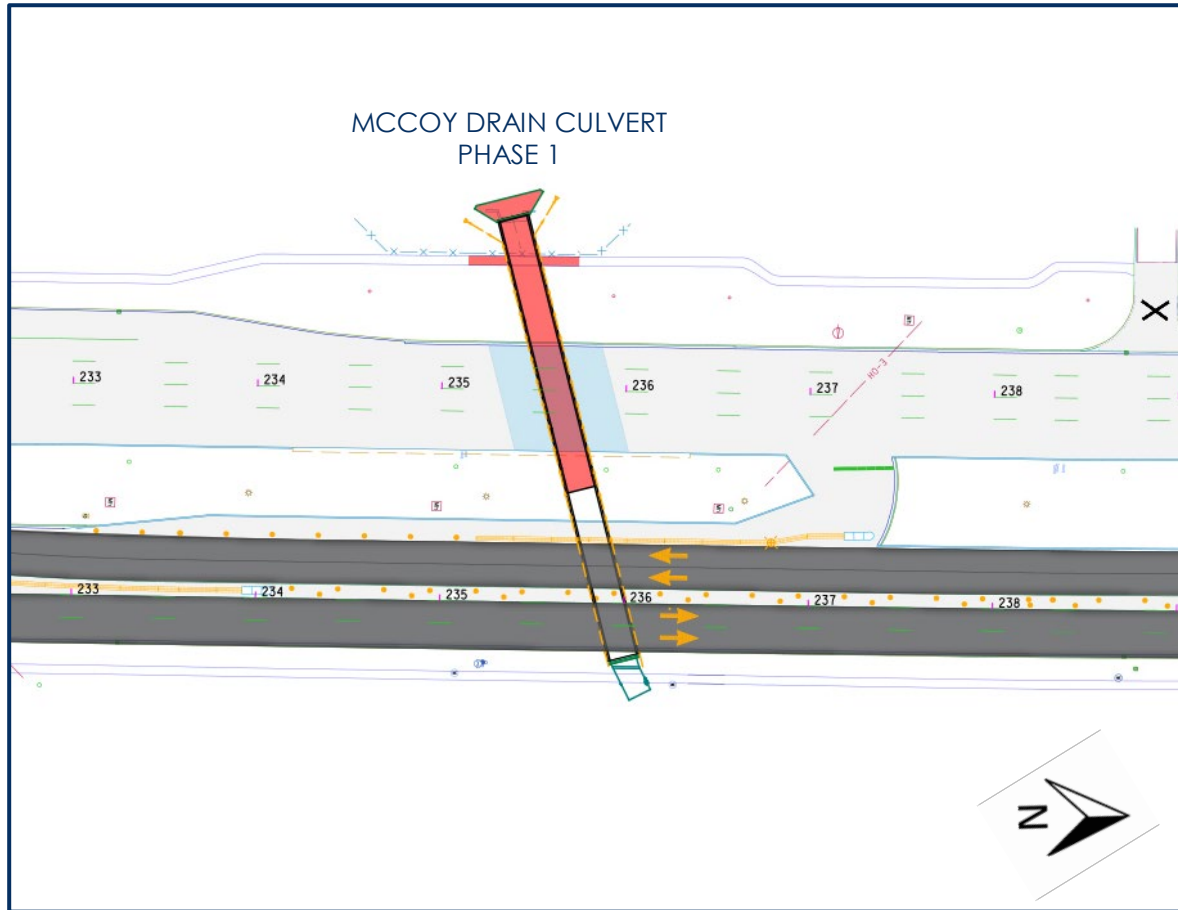
MOUND ROAD OVER BEAR CREEK CULVERT

PHASE 1 & 2



MOUND ROAD OVER MCCOY DRAIN CULVERT

PHASE 1 & 2





PROJECT OMBUDSMAN



Project Ombudsman
JON BAILEY

- ▶ 1-855-MOUND-4U (668-6348)
- ▶ info@innovatemound.org

CONTACT US

1-855-MOUND-4U (668-6348)

Info@InnovateMound.org

www.InnovateMound.org

FOLLOW US



@InnovateMound

MEDIA INQUIRIES

Eric Dimoff, Macomb County Department of Roads

